

# IPALAMENTE YEPHONDO LENTSHONA KOLONI



## INCWADI YEMFUNDISO YOLUNTU









## ULUHLU LWEZIQULATHO

---

Intshayelelo noMfanekiso Jikelele .....	3
Amaphawu we - WCPP .....	4
Isahluko 1: Imigqaliselo yeDemokhrasi .....	5
Yintoni iDemokhrasi .....	7
Igumbi leNgxoxo .....	7
Imigqaliselo yeDemokhrasi .....	8
Imibuzo yeNgxoxo .....	8
Amanqaku .....	10
Isahluko 2: Amacandelo aMathathu kaRhulumente.....	11
Ingcaciso ngeMifanekiso yaMacandelo aMathathu kaRhulumente.....	13
Imibuzo yeNgxoxo .....	14
Isahluko 3: Iintsika eZintathu zaMacandelo asebuRhulumenteni .....	15
Ingcaciso ngemifanekiso yeeNtsika eZintathu zaMacandelo asebuRhulumenteni .....	17
Umbuzo weNgxoxo.....	18
Isahluko 4: Imisebenzi yePalamente yePhondo leNtshona Koloni.....	19
1. Ulongamelo kunye noXanduva .....	21
2. Intatho-nxaxheba yoLuntu.....	23
3. Ukuwisa uMthetho.....	24
4. Ukuphunyezwa koMthetho oYilwayo weSiqhelo.....	25
Imibuzo yeNgxoxo.....	26
Isahluko 5: Umgaqo-siseko .....	27
Imbulambethe.....	29
Imvelaphi.....	29
Wazi uMgaqo-siseko Wakho – Wazi Amalungelo Wakho.....	30
Imibuzo yeNgxoxo.....	32
Amanqaku.....	10
Isahluko 6: Amaziko kaRhulumente aXhasa iDemokhrasi yoMgaqo-siseko.....	33
Amaziko eSahluko 9.....	35
Umbuzo weNgxoxo.....	38
Isahluko 7: Inkqubo yoHlahlo lwabiwo-mali .....	39
Yintoni uHlahlo lwabiwo-mali?.....	41
Ingaba imali isetyenziswa njani ngurhulumente? .....	41
Iimpawu zoHlahlo lwabiwo-mali olufanelekileyo .....	41
Umjikelo woHlahlo lwabiwo-mali loNyaka .....	41
Ingaba uluntu lungabandakanyeka njani? .....	42
Imibuzo yeNgxoxo.....	43

## ULUHLU LWEZIQULATHO

---

Isahluko 8: Iinkqubo yeeNgxelo zoNyaka .....	45
Yintoni lingxelo zoNyaka zeSebe .....	47
Kutheni kufuneka ukuba aMasebe wePhondo afake lingxelo zoNyaka kwiPalamente yePhondo? .....	47
Indima yoMhloli-zincwadi Jikelele .....	47
Indima yeeKomiti eZisisigxina kunye neKomiti yee-Akhawunti zikaRhulumente .....	47
Indima yoLuntu .....	48
Inkqubo yeeNgxelo zoNyaka .....	48
Imibuzo yeNgxoxo .....	49
Isahluko 9: Amaxwebhu eZikhalazo .....	51
Yintoni Uxwebhu lwesikhalazo .....	53
Iindidi zaMaxwebhu ezikhalazo .....	53
Iimfuneko zaMaxwebhu ezikhalazo ngokuSesikweni .....	53
Inkqubo yokufaka uXwebhu lweSikhalazo .....	53
Ukuphononongwa kwaMatyala waMaxwebhu eZikhalazo .....	54
Isahluko 10: Ukufakwa kwaMaxwebhu .....	55
Kukuthini ukufakwa koXwebhu .....	57
Afwakwa njani aMaxwebhu? .....	57
Yintoni equlathwe kuXwebhu oluFakiweyo? .....	57
Umsebenzi owenziwayo .....	58
Ezinye izinto eziluncedo .....	59
Uluhlu lwaMagama .....	61
Ufundo olongezelelweyo .....	64
Umgqaliselo waMaxwebhu eZikhalazo ngokwalo Mthetho unguNomb. 3 ka-2006 .....	67
Umthetho waMaxwebhu eZikhalazo waseNtshona Koloni, ka-2006 .....	71
ISihlomelo A sefomu yaMaxwebhu eZikhalazo .....	73
Ifomu yoVavanyo .....	75

## INTSHAYELELO NOMFANEKISO JIKELELE

---

Incwadi yoKufundisa yePhulo eliZiswa eLuntwini kunye noKufundisa uluNtu nekucingwa ukuba sisixhobo esiluncedo sokufundisa hayi ngexesha leendibano zocweyo eziyimfundiso kuphela kodwa ngenjongo yokuba nguvimba weenkukacha eziluncedo zobonelelo lokuqhubeka kweenkonzo zamaphulo okunika ulwazi oluyimfundiso eluntwini. Le ncwadi inika umfundi/umsebenzisi wayo imbonakalo yoluhlu lwemiba equlathwe kuyo nesulungekileyo ngokubanzi ngokunxulumene nemiba yoWiso-mthetho, uMgaqo-siseko weRiphabliki yaseMzantsi Afrika, amaziko karhulumente, amaziko akwisahluko sethoba neenkukacha zokubanjwa kwendibano yengxoxo nePalamente yePhondo leNtshona Koloni. Uluhlu lwemibuzo ekupheleni kwesahluko ngasinye lukhuthaza iingxoxo zeqelana elincinane zokuqonda okungakumbi.

Ukusetyenziswa kwale ncwadi:

- Iindibano zocweyo zemfundiso
- Iiseshoni zokunika ulwazi oluyimfundiso kuluntu olungabemi besixeko neemfanelo zabo
- Iingxoxo zeqelana elincinane
- Iinkqubo zokufundisa, ngamaxwebhu ezikhalazo nokufakwa kwawo

Siyathemba ukuba ezi nkukacha uyakuthi uzifumanise ziluncedo kuwe, zikunika ulwazi olufanelekileyo kwaye lunentsingiselo nanjengokuba usebenzisana nathi ekudaleni isimo sabemi abanezakhono zobuchule ngokubanzi phakathi kweendawo ezohlukeneyo zasekuhlaleni zePhondo leNtshona Koloni.

### ILogo yePalamente yePhondo leNtshona Koloni



ILogo yeWCPP ibonakalisa abantu abohlukeneyo, abasebenza ngodlamko baseNtshona Koloni kwiziko lemicimbi yepalamente.

Le mifanekiso mithathu, ibonakalisa iintsika ezintathu zamacandelo karhulumente, ezimi ngasentla kwesibane esikhanyisa kwizitepusi, ngoko ke ichaza ngentsebenziswano nokunyusa imigangatho yabantu esisebenzela bona.

lingqameko ezingasentla kwesibane esikhanyisa kwizitepusi zibonakalisa uphawu lweengqameko zesango lokungena kwiSitalato iWale Street kunye namacango avulekileyo abonakalisa ipalamente evulelekileyo nekufikeleleka uwonkewonke kuyo. Imitha yokukhanya kwelanga esemva kwemifanekiso ibonakalisa ithemba neminqweno yabantu.

Kusetyenziswa amagama weelwimi zontathu esisetyenziswa ngokusesikweni zephondo - IsiBhulu, isiXhosa nesiNgesi.

Umfuziselo orhangqwe ngomphetho omnyama ubonakalisa uphawu lwe WCPP ngokusesikweni.

### Intonga yeGunya



Intonga yeGunya isetyenziswa ngabasebenzi be-ofisi ngokusesikweni njengophawu lokunika uSomlomo igunya kunye nelungelo lokuba aMalungu wePalamente athethe ngokukhululekileyo.

Ekuqaliseni kwendibano nganye yokuhlala kweNdlu, intonga yegunya ibekwa phezu kwetafile phambi koSomlomo kwaye isuswa kuphela ukuchithakala kweNdlu.

Apha phezulu kuyo kukho isithsatyana seprothiya kunye namakhonkco. Isithsaba sihlala phezu kwengqayi yamaKhoyisan, sihonjiswe ngee-ankile kunye nezipha zediliya. Apha nje kumphezulu nangezantsi kwengqayi kukho umsebenzi wezandla owenziwe ngeentsimbi weemveli wama San. Emazantsi komphini womnimbithi kukho isiqwane esenziwe ngendlela ethile yobuchule bomsebenzi wobugcisa. Apha kumzantsi wentonga yegunya kukho igolide emhlophe netyheli engumlinganiselo ofikelela kwi-9 sobunzima bamatye anqabileyo.

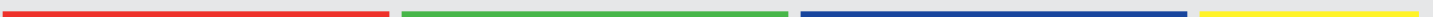


# IPALAMENTE YEPHONDO LENTSHONA KOLONI



## IS AHLUKO 1

### IMIGQALISELO YEDEMOKHRASI





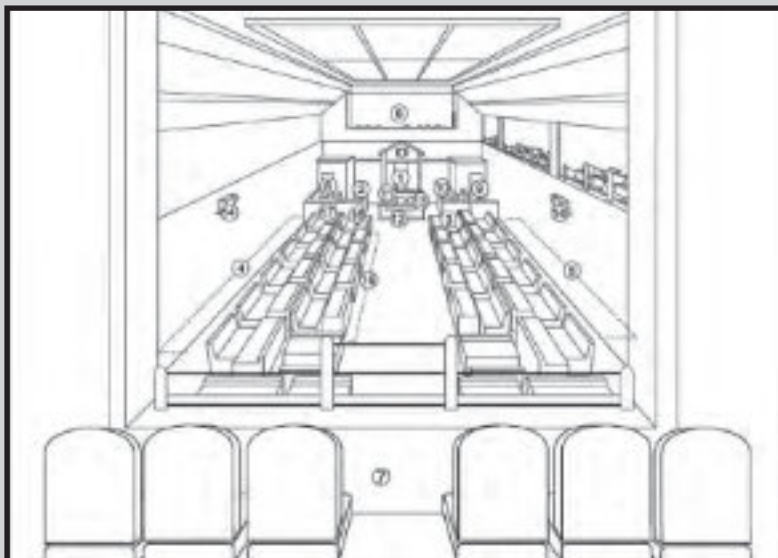
## YINTONI IDEMOKHRASI?

IDemokhrasi yinkqubo yokulawula esetyenziswa kulawulo lwelizwe. Eyona ngcaciso yesiqhelo yedemokhrasi “ngurhulumente wolawulo lwabantu”. Oku ngokwesiseko kuthetha ukuthi, ngabantu abanika urhulumente isigunyaziso (imvume yabo) sokulawula ilizwe egameni labo. Ngokwelungelo labo lokuvota, abantu banikwa ithuba lokuzikhethela, unyulo ngokufanelekileyo, ngokukhululekileyo ngokwesiqhelo, amaqela ezopolitiko nabantu abathatha inxaxheba kwezombuso abayakuthi babengabameli babo eburhulumenteni.

Emva konyulo, urhulumente ubanoxanduva oluninzi. Unoxanduva lolawulo lwezinto eziluncedo zobutyebi belizwe ezinjengomhlaba, amanzi neenkonzole zoluntu ukuqinisekisa ukuba iimfuneko ezisisiseko zabantu ziya fezekiswa. Kufuneka ukuba abantu bahlawule iirhafu kurhulumente kwaye le mali ikhutshelwa ukuhlawula iindleko zeenkonzole ezinjengokhathalelo olusisiseko lwezempilo kunye nezemfundo, iminikelo yezibonelelo zoluntu kunye nemihlalaphantsi, iindlela, izindlu, amanzi kunye nezinye izinto. Ngethuba ulonyulo olunobulunga kunye nolukhululekileyo luyinxalenye yomba obalulekileyo kakhulu kwidemokhrasi, idemokhrasi ngumba ongaphezulu nongaphaya kunokuvota.

IDemokhrasi ikwanika abemi ithuba lokuthatha inxaxheba kumngangatho karhulumente wommandla. Ukuthatha inxaxheba kwabemi kuluncedo ekuqinisekiseni ukuba abemi abonyuliweyo kunye namagosa aseburhulumenteni banoxanduva malunga namanyathelo wabo abawathathileyo. Kulindeleke ukuba basebenze ngentembeko nangenkuthalo kwaye babonelele ngeenkonzole ngokwezithembiso zabo abazenzileyo ngexesha lokwenziwa kweempembelelo zolonyulo, kwaye basebenze ngokuvulelekileyo nangokungafihlisiyo. Xa uninzi lwabemi luvotela urhulumente, banika urhulumente igunya lokuphumeza nogunyaziso lwemithetho egameni labo. Ukuba urhulumente uthetha akathandwa ngabantu, iqela elilawulayo lezopolitiko lisenokungafumani zivoti zegunya lolawulo kwaye indawo yalo iyakuthi ithathwe lelinye iqela lezopolitiko eliphikisayo okanye kwenziwe imbumba yomanyaniso lwamaqela ezopolitiko.

### Ukwakhiwa kweGumbi leNgxoxo



1. USomlomo
2. INkulumbuso
3. INkokheli yeQela lezoPolitiko eliPhikisayo
4. Elona Qela ikhulu lezoPolitiko liPhikisayo
5. Iqela lezoPolitiko eliPhikisayo
6. Igalari yoSazaza lweeNdaba
7. Igalari yoLuntu
8. Indawo eKuhlala kuyo Igosa
9. Indawo eKuhlala kuyo uSomlomo neKuhlala kuyo iNkulumbuso
10. Abaniki-ngxelo ngeHansard
11. UNobhala
12. INTonga yeGunya
13. Itafle
14. Iikhamera zikaMabonakude (TV)
15. Izitulo ezide zaBaphathiswa
16. Inkokheli yoMcimbi wasebuRhulumenteni
17. Umbhexeshi oyiNtloko

# IMIGQALISELO YEDEMOKHRASI

---

## Intathonxaxheba

Abantu banelungelo kunye nemfanelo yokuvota kulonyulo kwanokuzibandakanya nemibutho yezopolitiko neyasekuhlaleni ngokubanzi.

## Ukulingana

Bonke abantu kufuneka baphathwe ngokulinganayo kwaye kungabikho calulo kwaye banikwe amathuba ngokulinganayo.

## Ukunyamezeleka

Wonke umntu, kuquka amaqela aligcuntswana, kufuneka bavunyelwe ukuba bachaze izimvo zabo kwaye bazibandakanye neqela lezopolitiko, elenkolo okanye nemibutho yoluntu yasekuhlaleni ngokubanzi abazikhethela lona ngokwabo.

## Uxanduva

Urhulumente kufuneka abenoxanduva ebantwini malunga namanyathelo awathathileyo, kuquka imithetho ephunyeziweyo kwanendlela esetyenziswa ngayo.

## Ngokungafihlisiyo

Urhulumente kufuneka anike ingxelo ngokungafihlisiyo nangentembo— kufuneka “enze izinto ngokungafihlisiyo” (njengembonakalo yento efestileni) xa esebenzisana noluntu jikelele.

## Ukubanjwa kolonyulo oluNobulunga nangoKukhululekileyo Ngokwesiqhelo

Ulonnyulo kufuneka lwenziwe rhoqo kwaye ngendlela enobulunga nangokukhululekileyo, ngaphandle koloyikiso, urhwaphilizo okanye iintsongelo kulo naliphi na ilungu loluntu.

## Ukwamkela iziphumo zoLonyulo

Xa iqela lezopolitiko lithe alaphumelela kulonyulo, iinkokheli nabaxhasi balo kufuneka basamkele isiphumo solonyulo.

## Amalungelo woMntu

Amalungelo womntu ngamnye kunye namaqela kufuneka akhuselwe, njengoko kukhankanyiwe kuSomqulu waMalungelo.

## Umthetho woLawulo

Imithetho yolawulo ithetha ukuthi akukho namnye mntu ongaphaya komthetho, kuquka umongameli-mbuso okanye inkokheli yelizwe.

## Inkqubo eSetyenziswa yiMibutho eMininzi yeZopolitiko

Angaphezulu kweqela elinye lezopolitiko ekufuneka evunyelwe ekuthatheni inxaxheba kulonyulo nasekudlaleni indima yawo eburhulumenteni.

## IMIBUZO YENGXOXO

---

1. Zeziphi ezona zinto zingundoqo ziyinxalenye yedemokhrasi esebenzayo?

---

---

---

---

---

2. Yintoni unxulumano phakathi kwamalungelo womntu kunye nedemokhrasi?

---

---

---

---

---

3. Yeyiphi indima enokudlalwa zizikolo kwimfundiso ngedemokhrasi ?

---

---

---

---

---

4. Yeyiphi imingeni engundoqo efunyanwa kwidemokhrasi kula maxesha sikuwo?

---

---

---

---

---

---

---

---

---

5. Ingahoywa njani ingxaki yokungaphumeleli kwenani eloneleyo labavoti?

---

---

---

---

---

---

---

# AMANQAKU



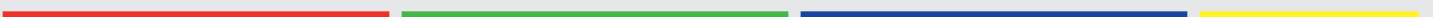
A series of horizontal lines for writing, spaced evenly down the page.

# IPALAMENTE YEPHONDO LENTSHONA KOLONI



## ISAHLUKO 2

AMACANDELO AMATHATHU  
KARHULUMENTE







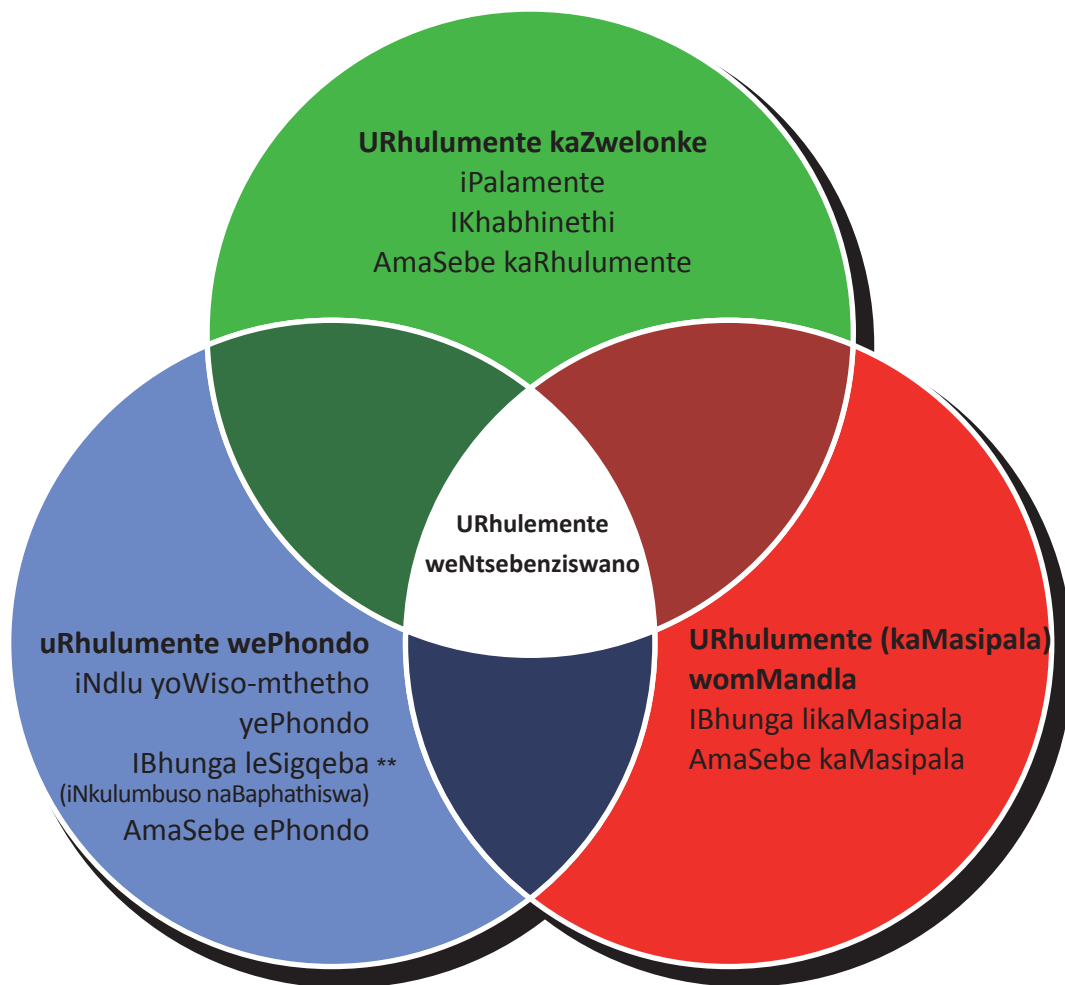
## AMACANDELO AMATHATHU KARHULUMENTE

Umgaqo-siseko weRiphabhliki waseMzantsi Afrika, ka 1996 ubonakalisa indlela asebenza ngayo urhulumente.

Mathathu amacandelo karhulumente:

1. Urhulumente wesizwe
2. Urhulumente wephondo
3. Urhulumente wommandla

La ngamacandelo awohlukeneyo, anolwalamano kunye noxhomekeko elinye kwelinye.



\*\* Umgaqo-siseko waseMzantsi Afrika wesizwe, icandelo 101, 1(a) kunye nomgaqo-siseko wePhondo leNtshona Koloni, icandelo 42(1) owenza ulungiselelo lwamaphondo ukuze abaneko ukuthunyelwa kwisigqeba sephondo lawo njenge “khabhinethi yephondo” kunye namalungu wesigqeba sombuso sephondo njenga “Baphathiswa bephondo.”

## IMIBUZO YENGXOXO

---

1. Kutheni ucinga okokuba sinamacandelo amathathu karhulumente eMzantsi Afrika?

---

---

---

---

---

---

---

---

2. Chaza kwaye unike ukuhlelwa ngokodidi kwamagunya kunye nemisebenzi yecandelo ngalinye likarhulumente.

---

---

---

---

---

---

---

---

3. Achongwa njengamacandelo awohlukeneyo karhulumente anohlangabezano nekukho intsebenziswano phakathi kwawo.

---

---

---

---

---

---

---

---

4. Sesiphi isahluko soMgaqo-siseko esinika igatya lomthetho lorhulumente wentsebenziswano?

---

---

---

---

---

---

---

---

# IPALAMENTE YEPHONDO LENTSHONA KOLONI



## ISAHLUKO 3

IINTSIKA EZINTATHU ZAMACANDELO  
ASEBURHULUMENTENI







## Ukwahlukana kwaMagunya (UMgaqo-siseko weRiphabliki yaseMzantsi Afrika, ka 1996)

- Oku kwahlukana kwamagunya oMgaqo-siseko kuthetha ukuthi imisebenzi kunye namagunya karhulumente yohlulwe yaba ngamasebe amathathu awohlukeneyo, ukuwabiza, iNdlu yoWiso-mthetho, iSigqeba soMbuso kunye neCandelo leeNkundla.
- Isebe ngalinye kula lizimele kwaye ngalinye kuwo linemisebenzi yalo.

## IINTSIKA YECANDELO LOWISO-MTHETHO

- Ukuphunyezwa kwemithetho
- Ulongamelo/ukubek'iliso kwisigqeba sombuso
- Ukumela abantu
- Ukonyula uMongameli-mbuso, okanye iNkulumbuso ngokwamamaphondo

## IINTSIKA EZINTATHU ZAMACANDELO ASEBURHULUMENTENI

---

Ziqulatha oku:

IPalamente

1. INdlu yoWiso-mthetho yeSizwe
2. iBhunga leSizwe laMaphondo
3. Izindlu zoWiso-mthetho

### IINTSIKA YECANDELO LESIGQEBA SOMBUSO

- Ukumisela imigaqo-nkqubo
- Imithetho ecetywayo
- Ukuphumeza imithetho
- Uxanduva lokwenza isicwanngciso nolungiselelo lweenkonzo eziphambili

Iqulatha oku:

UMongameli-mbuso, iSekela Mongameli-mbuso kunye naBaphathiswa beKhabhinethi kumgangatho wesizwe

INkulumbuso kunye naMalungu weBhunga leSigqeba soMbuso kumgangatho wephondo

- Ukumisela imigaqo-nkqubo
- Imithetho ecteywayo
- Ukuphumeza imithetho
- Uxanduva lokwenza isicwangciso nolungiselelo lweenkonzo eziphambili

### ICANDELO LEENKUNDLA

- Imicimbi yoMgaqo-siseko
- Kwiimeko apho kukho izezo zolwaphulo mthetho
- Izibhenzo ngokuchasene nezigwebo
- Kuquka oku:  
Inkundla yezoMgaqo-siseko, Eyona Nkundla iPhakamileyo yeZibhenzo, linkundla zooMantyi neNkundla eZiphakamileyo

### UMBUZO WENGXOXO

---

1. Kutheni ukohlukana kwamagunya kubalulekile??

---

---

---

---

---

---

---

# IPALAMENTE YEPHONDO LENTSHONA KOLONI



## IS AHLUKO 4

IMISEBENZI YEPALAMENTE  
YEPHONDO LENTSHONA KOLONI







## 1. ULONGAMELO KUNYE NOXANDUVA

Kwimeko yolungiselelo lwaseMzantsi Afrika ulongamelo kunye noxanduva yimisebenzi yesigunyaziso somgaqo-siseko wezindlu zowiso-mthetho/iipalamente zephondo yokuhlolisisa nolongamelo lwenyathelo elithathwa sisigqeba sombuso salo naliphi na inqwanwa lombuso laseburhulumenteni. Umgaqo-siseko weRiphabliki yase Mzantsi Afrika wecandelo 114(2) ugunyazisa oku:

IPalamente yephondo okanye indlu yowiso-mthetho kufuneka ibonelele ngeendlela zobuchule obusetyenziswayo --

- a) Ukuqinisekisa ukuba onke amalungu angamanqwanqwa wombuso aseburhulumenteni wephondo anoxanduva lokunika inkcazelo kuyo; kunye
- b) nokugcina ukwenziwa kolongamelo olumalunga--
  - i. inomsebenzi wesigunyaziso sesigqeba sombuso sephondo apha kwiphondo, kuquka ukuphunyezwa komthetho; kunye
  - i. naliphina inqwanqwa lombuso laseburhulumenteni lephondo.”

### Ukunika ingcaciso ngoLongamelo kunye noXanduva

Igama elithi “Ulongamelo” lisuka emthethweni – “ulongamelo” noxanduva njengesiphumo esisiso ngokuthe ngqo. Uxanduva phantse lwafana “nokubanako ukunika impendulo”. Ukuthatha uxanduva kunika uxanduva kwabo benza ulongamelo ukuze babenako ukunika inkcazelo yazo zonke izigqibo kunye namanyathelo abawathathileyo ngexesha elithile. Iingcaciso ezininzi zokwenziwa kolongamelo zisetyenziswa kwiipalamente ezohlukeneyo nakwimibutho yasepalamente.

Umbutho woManyano lwangaphakathi lwasePalamente ucacisa ulongamelo lwepalamente “njengokwenziwa kohlobo, ukubeka iliso kunye nolongamelo luka rhulumente kunye nee-arhente zoluntu, kuquka ukuphunyezwa komgaqo-nkqubo kunye nomthetho. Le ngcaciso igqalise kwinqwaba nakuhlobo lwemisebenzi yolongamelo endaweni yamanqanaba wenkqubo esetyenziswayo. Iqulatha umsebenzi wazo zombini iikomiti zepalamente neendibano zengxoxo zepalamente kunye neentlangano zomanyelo-zimvo zoluntu ngethuba lezigaba zemithetho eyilwayo yasepalamente kunye nomjikelo wohlahlo-lwabiwo-mali.”

Ulongamelo luqulatha izinto ezisesikweni kunye nezingamiselekanga, ezibukelekayo, zeqhinga lobuchule bezindlu zowiso-mthetho ekwenzeni uphicotho, kuquka nepalamente yesizwe malunga nokuphunyezwa kwemithetho, ukuvunyelwa nenkcitho yohlahlo-lwabiwo-mali, nokuqwalaselwa ngokungqongqo kwemithetho ebhaliweyo yezoMgaqo-siseko. Ukongeza, okona kubalulekileyo, luqulatha ulongamelo lolawulo olusebenzayo lweelungu ngalinye lesigqeba sombuso solawulo olumiselweyo kumasebe karhulumente ukuqhubela phambili ukuphuculwa kohanjiso lweenkonzo ukufezekisa ukuphila kwabantu uhlobo lobomi obusemgangathweni xa bebonke.

Ngokwemigaqo yamagatya womthetho woMgaqo-siseko, ipalamente kunye nezindlu zowiso-mthetho zephondo kufuneka zigcine ukwenziwa kolongamelo lwawo onke amalungu aseburhulumenteni, kuquka abo bakwimigangatho yephondo nakurhulumente wommandla.

Ukubanoxanduva luphawu olubonakalisa ulawulo lwedemokhrasi lwamaxesha angoku. Idemokhrasi ihlala ingenasongo ukuba abo basemagunyeni abagcini ukuzimisela ekuthatheni uxanduva eluntwini malunga nemithetho yabo okanye izinto abathe bazikhuphela ngaphandle ngokwezigqibo zabo, inkcitho-mali okanye imigaqo-nkqubo yabo. Ngokwembali yamandulo, ingqiqo yokubanoxanduva yayinxulunyaniswa kakhulu nokunika inkcazelo ngemeko yezimali. . Kananjalo, ngoku kuhambela phambili kakhulu kunakuqala kwaye ngoku kubonakalisa uphawu lolawulo olulungileyo kuwo omabini amaziko karhulumente nelabucala. Uxanduva lubhekisela ekunikeni inkcazelo ngoxanduva lokwenziwa kwemisebenzi abayinikwe kumaziko.

## IMISEBENZI YEPALAMENTE YEPHONDO LENTSHONA KOLONI

---

Uxanduva lwePalamente lugqalise ekuqinisekiseni ukuba oorhulumente namanqwanqwa aseburhulumenteni kufuneka befezekise imisebenzi yoxanduva lwabo kwaye ukuba abakwenzanga oku, kufuneka zibekhona ezinye iindlela zobuchule ezisetyenziswayo ukuze bahlale benika inkcazelo malunga namanyathelo abawathathileyo okanye izinto abazikhuphele ngaphandle.

Uxanduva lusekelwe phezu kwezigaba ezine, okt.

- (a) Ngubani onoxanduva?
- (b) Yintoni uxanduva lwakhe?
- (c) Ngubani anoxanduva lokumnika inkcazelo?
- (d) Lungagunyaziswa njani uxanduva lokunika inkcazelo.

### Imisebenzi yoLongamelo

Ingqiqo yolongamelo iqulatha imiba emininzi nethi ibandakanye ezopolitiko, ulawulo, ezezimali, iinqobo ezisesikweni, ezomthetho nezinye izinto zobuchule bokwenziwa komsebenzi. Imisebenzi yolongamelo ihamba ngolu hlobo:

- Ukufumanisa nokuthintela uxhatshazo, ukuziphatha ngohlobo olungamiselekanga lokwenza izinto ngaphandle kwengqiqo okanye ngokungekho mthethweni nangokungahambelaniyo nomgaqo-siseko kwicala lika rhulumente kunye nakumalungu aseburhulumenteni. Umsebenzi ongunoqo kukukhusela amalungelo neenkululeko zabemi.
- Ukugcina urhulumente enoxanduva ngokuphathelele nendlela ekusetyenziswa ngayo izimali zabahlawuli berhafu. Ukufumanyaniswa kokusetyenziswa kwemali ngendlela engafanelekanga kwizixhobo zomsebenzi zikarhulumente kunye nangamanqwanqwa ombuso aseburhulumenteni. Ngoko ke kusenokuphucula ukwenziwa kwemisebenzi ngempumelelo, kwezoqoqosho nenkuthalo kwimisebenzi karhulumente.
- Ukuqinisekisa ukuba imigaqo-nkqubo eyaziswe ngurhulumente nethe yagunyaziswa yipalamente nezindlu zowiso-mithetho ihanjiswa ngendlela eyiyo eluntwini. Lo msebenzi uquka ukuqwalasela okufezekisiweyo nolungiselelo lweenjongo zowiso-mithetho kunye neenkqubo zikarhulumente buqu.
- Ukuphucula ukwenziwa kwemisebenzi karhulumente ngokungafihlisiyo nokongeza intembeko karhulumente eluntwini, nokuthi kudale isimo sohanjiso lweenkonzo zomgaqo-nkqubo ngokusebenzayo.

### Imisebenzi yoXanduva

Imisebenzi yoXanduva iquka oku kulandelayo:

- Ukongeza intembeko yolawulo lukarhulumente ukukhusela urhulumente kurhwaphilizo, umntu onenkethe yokunika izalamane zakhe uncedo xa umntu esemagunyeni, ukusebenzisa amagunya ngendlela egxwenxa kunye nezinye iindlela zokuziphatha ngokungafanelekanga. .
- Njengolungiselelo lweziko, lokuqalisa ulawulo lwedemokhrasi.
- Ukuphucula ukuhamba komsebenzi, okuyakuthi kukhuthaze imfundiso kumaziko nohanjiso lweenkonzo.
- Ngokuphathelele nokwenza izinto ngokungafihlisiyo, ukuphendula ngokweemfuno zoluntu nokubanako ukuphendula, ukuqinisekisa intembeko karhulumente eluntwini nokuvala isikhewu phakathi kwabo balawulwayo kunye norhulumente ukuqinisekisa ukoneliseka koluntu ngurhulumente olawulayo.
- Ukunceda uluntu lubenako ukunika izimvo zalo malunga nokuhamba komsebenzi karhulumente ngokunika inkcazelo kukarhulumente eluntwini.

### Ulongamelo noXanduva lweeKomiti

Indlela yobuchule obusetyenziswa kwizindlu zowiso-mithetho bokwenza ulongamelo lwamanqwanqwa ombuso aseburhulumenteni ngokusebenzisa iikomiti zawo, kuquka neendibano ezipheleleyo. Xa ikomiti iqhuba ulongamelo ingacela ukuba inikwe inkcaza kumalungu aseburhulumenteni okanye ityelele inqwanqwa lombuso laseburhulumenteni ukuze ifumane iinkcukacha ezibalulekileyo, ngokuxhomekeke kwinjongo yolongamelo. Iikomiti kufuneka zibenengqiqo yeendlela ezifanelekileyo zokukhokela ulongamelo ukuhlangabezana nawo onke amanqwanqwa ombuso aseburhulumenteni. Eminye yeyona miba ibaluleke kakhulu yomsebenzi wolongamelo kukubeka iliso elibukhali kuhlahlo lwabiwo-mali lwesebe, iingxelo zonyaka zamanqwanqwa ombuso aseburhulumenteni kunye nengxelo yoMhloli-zincwadi Jikelele

## IMISEBENZI YEPALAMENTE YEPHONDO LENTSHONA KOLONI

Ukuba kukho imfuneko yokunika inkcazelo ngokuthe vetshe, iikomiti zingasebenzisa amagunya eziwafumana kuuMgaqo-siseko wokufikelela kulwazi nokuba lusuka kumaqumrhu karhulumente akumgangatho waseburhulumenteni wephondo okanye wommandla ukuze iikomiti zibeneenkukacha kunye nolwazi olupheleleyo malunga nengxelo efumanekileyo yomsebenzi karhulumente. Apho iikomiti ihlola ukuhamba komsebenzi wenqwanqwa lombuso laseburhulumenteni, iikomiti kufuneka iqinisekise ukuhamba komsebenzi kwamanye amaqumrhu wayo, okt. abancedisi belona nqwanqwa lombuso likhulu laseburhulumenteni, baqukiwe kwingxelo. Ukuba oku akuqukwanga kwingxelo, ipalamente okanye indlu yowiso-mthetho okanye iikomiti kufuneka isebenzise imigaqo yeCandelo 56(b), 69(b) okanye 115(b) lomgaqo-siseko wemfuneko yokuba iqumrhu lifake ingxelo kuyo. .

### 2. INTATHONXAXHEBA YOLUNTU

Intatho-nxaxheba yoluntu yinkqubo esetyenziswa yiPalamente kunye neepalamente zamaphondo yokubamba udliwanondlebe nabantu kunye nabanomdla okanye abachaphazelekayo, imibutho kunye namaqumrhu karhulumente ngaphambi kokuthathwa kwesigqibo. Ukuthatha inxaxheba koluntu yindlela yobuchule obusetyenziswayo bokusombulula ingxaki ethatha iintsuku ezimbini zothethathethwano ngokuhlangeneyo ngenjongo yokufezekisa umzekelo wokuthatha izigqibo ezamkelekileyo ngokubanzi. Kweminye imiqathango ngamanye amaxesha akusetyenziswa kwaphela 'ukubandakanyeka koluntu', ukubandakanywa kwabantu basekuhlaleni okanye ukubandakanyeka kwamahlakani.

'Amahlakani' aquka uluhlu lwemibutho engekho phantsi korhulumente nemibutho engafumani ngeniso; amaqela asekuhlaleni, imibutho yomanyano yoncedo lwesisa, umanyano lwabasebenzi, imibutho yenkolo, imibutho yesiseko soncedo lwengxowa-mali kunye nemibutho yeengcali. Oku kubonakalisa ubomi obuphilwa luluntu; ukuchaza ngezinto zeminqweno yabo kunye neenqobo ezisesikweni zamalungu wabo okanye abanye abantu ngokusekelwe phezu kweenqobo ezisesikweni, inkcubeko, ezopolitiko, ezenzululwazi, ezenkolo okanye iingqiqo zabantu ababonelela ngoncedo lokuthanda abantu.

Okufunekayo kwuwiso-mthetho ekuphumezeni intathonxaxheba yoluntu njengoko kugxininisiwe kumgaqo-siseko weRiphabliki yaseMzantsi Afrika .

#### Icandelo 1: Ukufumanisa iiNqobo eziSesikweni

IRiphabliki yaseMzantsi Afrika lelinye lamazwe lombuso wozimeleqe, ilizwe ledemokhrasi elayafunyaniswa linezi nqobo zilandelayo:

- Isidima soLuntu, ukufezekiswa kokulingana nokukhuthaza amalungelo wabantu nenkululeko yabo.
- Ukuphelisa ucalucalulo ngokobuhlanga nangokwesini.
- Ukubaluleka kakhulu komgaqo-siseko nolawulo lomthetho.
- Bonke abantu abadala banelungelo lokuvota, umqulu wabavoti, ulonyulo ngokwesiqhelo kunye nenkqubo yamanye amaqela ezopolitiko karhulumente wedemokhrasi ukuqinisekisa ukunika inkcazelo, ukuphendula ngokweemfuno nangokuvulelekileyo.

#### Isahluko 6: IPalamente yePhondo

Icandelo 115– Ukuzisa ubungqina okanye iinkcukacha ngaphambili

kwiPalamente yePhondo. IPalamente yephondo okanye neyiphi na kwiikomiti zayo inako—

- Ukunika nawuphi na umntu isamani yomyalelo wokumbizela kuyo ukuze anike ubungqina ngokwenza isifungo okanye ingqinisekiso, okanye akhuphe amaxwebhu;
- Ifuna ukuba nawuphi na umntu okanye iziko linike ingxelo kuyo;
- ukunyanzelisa, ngokwemiqathango yowiso-mthetho yephondo okanye imithetho yolawulo kunye nemiyalelo, nawuphi na umntu okanye iziko ukuze lithobelane nemithetho yeesamani okanye iimfuneko ngokomhlathi (a) okanye (b); kunye
- nokufumana amaxwebhu ezikhalazo, ukunika inkcazelo kwabameli okanye amaxwebhu afakiweyo asuka kubo nabaphi na abantu okanye amaziko anomdla..

## IMISEBENZI YEPALAMENTE YEPHONDO LENTSHONA KOLONI

---

Icandelo 116—Ulungiselelo lwangaphakathi, iinkqubo kunye nemigaqo yeepalamente zephondo.

(1) IPalamente yePhondo inganako—

- b) ukumisela umthetho kunye nemiyalelo ngokuphathelele nemicimbi yayo, emalunga nokumela kunye nedomokhrasi yokuthatha inxaxheba, uxanduva, ukwenza izinto ngokungafihlisiyo, kunye nokuzibandakanya koluntu.

Icandelo 118— Ukufikelela nokuzibandakanya koluntu kwiipalamente zephondo.

(1) IPalamente yePhondo kufuneka:

- a) Ukuququzelela ukuzibandakanya koluntu kuwiso-mthetho nakwezinye iinkqubo zepalamente neekomiti zayo, kunye
- b) Nokuqhuba imicimbi yayo ngendlela evulelekileyo, nokubamba iindibano zayo zepalamente, kunye nabo beekomiti zayo, phakathi koluntu, kodwa kufuneka kuthathwe amanyathelo afanelekileyo
- c) Ukulawula ukufikelela koluntu, kuquka ukufikelela kwabapapashi beendaba kwiWCPP nakwiikomiti zayo.

### 3. UKUWISA UMTHETHO

Omnye wemisebenzi engundoqo wePalamente yePhondo leNtshona Koloni kukumisela imithetho yePhondo laseNtshona Koloni. Umthetho ocetywayo waziwa njengoMthetho oYilwayo kwaye usenokwaziswa nguMphathiswa wePhondo, yikomiti okanye iILungu lePalamente yePhondo. Emveni kokwaziswa koMthetho oYilwayo ugqitha kumanqanaba awohlukeneyo kwiPalamente yePhondo ngaphambi kokuba ube ngumthetho. Inqanaba ngalinye (elibizwa ngokuba lufundo) kufuneka livunyelwe ngaphambi kokuba kuqhutyelwe phambili ngoMthetho oYilwayo ukuya kwinqanaba elilandelayo. KwiMithetho eYilwayo yesiqhelo kukho amanqanaba amabini kwaye kwiMithetho eYilwayo yezezimali kukho amanqanaba amathathu.

Xa kuthe kwenziwa isaziso, seMithetho eYilwayo iyafundwa okokuqala kwaye inikezelwe kuwo onke aMalungu eNdlu. UNobhala wePalamente yePhondo upapasha uMthetho oYilwayo kwiintsuku ezingama 21 kwiPhepha-ndaba loMbuso ukuze uluntu lunike izimvo zalo. Ukuba uMthetho oYilwayo ungxamisekile, uNkulumbuso unika umyalelo wokuba kuncitshiswe ixesha leentsuku ezingama 21 zokupapashwa kwawo. Emveni kweentsuku ezingama 21 ikomiti esisigxina yenza ingqiqo ngalo Mthetho uYilwayo, nokuqwalasela zonke izimvo ezifumaneka eluntwini nakumaqela anomdla. Ikomiti ingabiza iintlanganiso zomanyelo-zimvo zoluntu malunga noMthetho oYilwayo. Oku kuqinisekisa ukusetyenziswa kwengqiqo yoMthetho oYilwayo ngobulumko nokuvumela ukuthatha inxaxheba koluntu nokunika izimvo zalo ngobuninzi balo. Emveni kokuba ushukuxiwe, ikomiti inika iNdlu iingxelo kwaye inike ingcebiso yokuba wamkelwe kusini na, ukwamkelwa okanye ukugatywa koMthetho oYilwayo nokwenziwa kolungiso lwawo.

Kwinqanaba elilandelayo (ufundo lwesibini) kuhlangatyezwana neenjongo kunye nemigqaliselo yoMthetho oYilwayo. INdlu ibamba ingxoxo-mpikiswano ngomthetho oYilwayo. Emveni kofundo lwesibini uMthetho oYilwayo uphinda ubhalwe phantsi yikomiti efanelekileyo ukuze yenze ulungiso lokugqibela lomthetho oYilwayo, ukuba iNdlu ithetha yenza isicelo soku. INdlu isenokuwuvumela uMthetho oYilwayo okanye ithathe isigqibo salo Mthetho ngevoti.

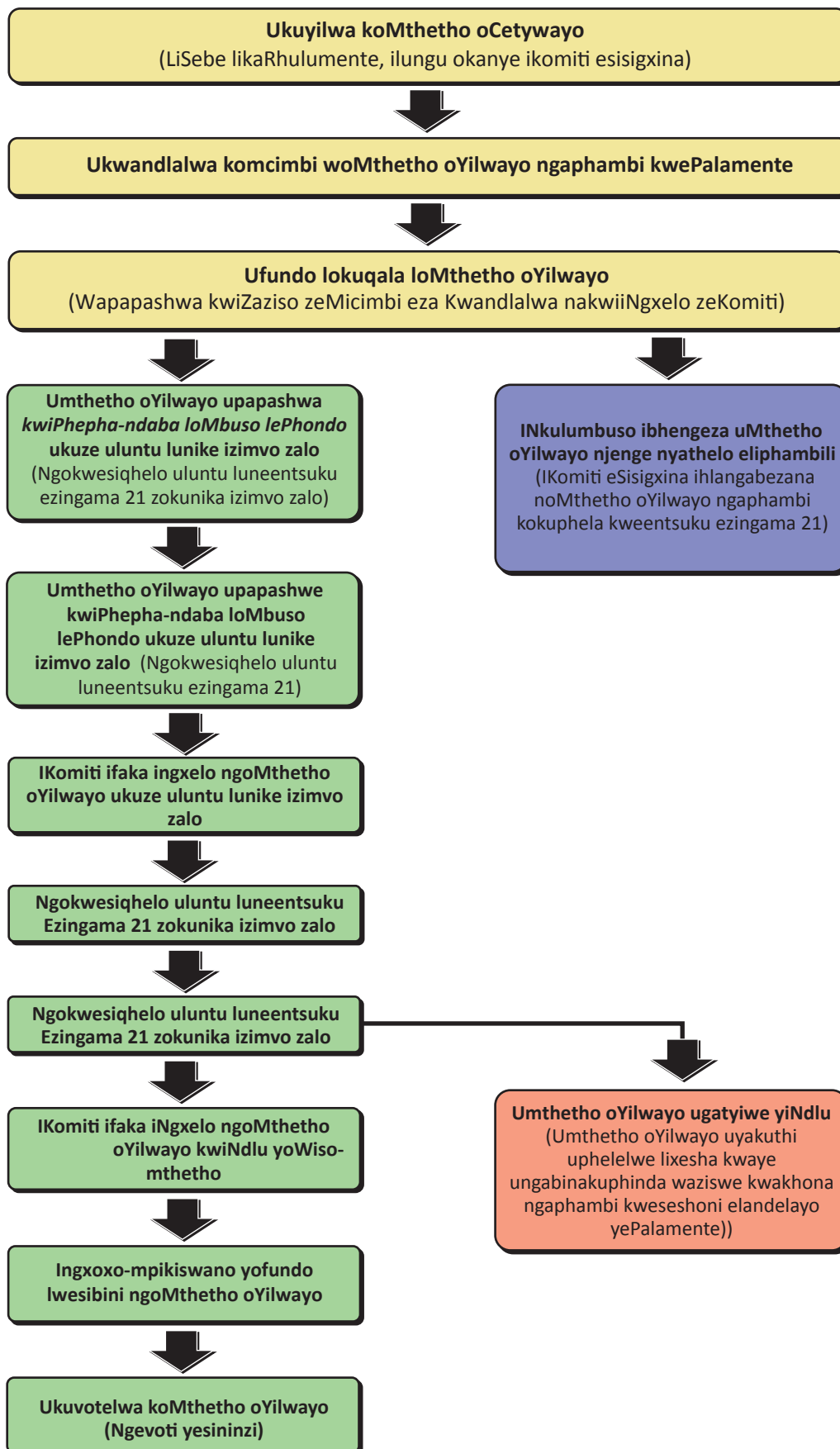
Ikopi yoMthetho oYilwayo njengoko uphunyezwe yiNdlu uthunyelwa kwiNkulumbuso ukuze ifake utyikityo lwayo (ukuwamkela). Xa iNkulumbuso ithetha yawamkela uMthetho oYilwayo, ujika ubenguMthetho wePhondo.

### Ulonyulo lweNkulumbuso

Icandelo 128 leSiquqo 6 loMgaqo-siseko waseMzantsi Afrika (RSA) unika indlela esetyenziswayo yokonyulwa kweNkulumbuso. INdlu yoWiso-mthetho kufuneka yonyule phakathi kwamalungu wayo umntu olibhinqa okanye oyindoda ukuze abeyiNkulumbuso yephondo. Olu lonyulo kufuneka lwenziwe ngexesha lokuhlala kwengxoxo yepalamente yokuqala emveni kolonyulo, kwaye nanini na xa kuyimfuneko yokuvala isikhewu sesithuba sengqesho esingenamntu.

Ijaji etyunjwe yiNtloko yeZobulungisa kufuneka yenze ulongamelo lolonyulo.

# UKUPHUNYEZWA KOMTHETHO OYILWAYO WESIQHELO



## IMIBUZO YENGXOXO

---

### ULONGAMELO KUNYE NOXANDUVA

1. Kutheni kubalulekile ukuba abameli bethu esibonyulileyo babenoxanduva lokunika inkcazelo?

---

---

---

2. Ingaba iPalamente yePhondo ilwenza njani ulongameLO lomsebenzi owenziwa siSigqeba soMbuso? (Iindlela zoBuchule oBusetyenziswayo)

---

---

---

3. Yintoni iKomiti eSisigxina?

---

---

---

4. Yintoni umahluko phakathi koxanduva lokunika inkcazelo kunye nolongameLO?

---

---

---

5. Leliphi igalelo anokuthi abenalo umntu ongummi wendawo lokwenza urhulumente abenoxanduva lokunika inkcazelo?

---

---

---

### INTATHO-NXAXHEBA YOLUNTU

1. Zeziphi iindlela ezinokwenza ukuba intatho-nxaxheba yoluntu ibenegalelo kulawulo lukarhulumente olulungileyo?

---

---

---

2. Leliphi icandelo loMgaqo-siseko elithetha ngentatho-nxaxheba yoluntu kwizindlu zowiso-mthetho?

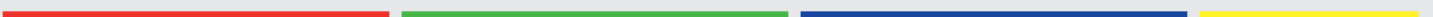
---

---

# IPALAMENTE YEPHONDO LENTSHONA KOLONI



## ISAHLUKO 5 UMGAQO-SISEKO







### IMBULAMBETHE

*Thina, singabantu baseMzantsi Afrika, Siyaziqonda Izenzo zoLawulo oluNgenabulungisa  
lwexesha lamandulo;*

*Sinika imbeko kwabo bathi bafumana ubunzima besilwela ulawulo lobulungisa kunye  
nenkululeko emhlabeni wethu; Ukuhlonipha abo basebenzela ukwakha nokuphuhlisa  
ilizwe lethu; kwaye*

*Sikholelwa ekubeni ilizwe laseMzantsi Afrika lelabo bonke abantu abahlala kulo,  
ngokumanyeneyo ngokweentlobo ngeentlobo zeenkubeko zethu  
Ngoko ke, ngenxa yabameli bethu esibonyule ngokukhululekileyo, siyawamkela lo  
Mgaqo-siseko njengowona mthetho wolawulo ubalulekileyo weRiphabliki yaseMzantsi  
Afrika ukuze-*

*Uhlangabezane neengxaki zeyantlukwano zexesha langaphambili kwanokumisela  
uluntu olusekelwe phezu kweenqobo ezisesikweni zedemokhrasi, ulawulo loluntu  
lobulungisa nokubaluleka kwamalungela woluntu;*

*Ukumisela iziseko zedemokrasi kunye noluntu oluvulelekileyo apho urhulumente  
asebenza ngokweemfuno zabantu ezisisiseko ngokubanzi kunye nokukhuseleka  
ngokusemthethweni kwabo bonke abemi beli lizwe ngokulinganayo;*

*Ukuphucula uhlobo lobomi obuphilwa ngabo bonke abemi beli lizwe kunye  
nokukhululela umntu ngamnye abenako ukusebenzisa amathuba wakhe  
ngokukhululekileyo noKwakha uMzantsi Afrika omanyeneyo nosebenzisa idemokhrasi  
ukuze uthathe indawo yawo efanelekileyo njenge ngelizwe lombuso elizimeleyo  
kusapho lwezizwe ngezizwe.*

*Thixo khusela abantu bethu.*

*Nkosi Sikelel'iAfrika. Morena boloka setjhaba saheso.*

*God seenSuid-Afrika. God bless South Africa.*

*Mudzimu fhatutshedza Afurika. Hosi katekisa Afrika*

### IMVELAPHI

Umgaqo-siseko waseMzantsi Afrika ngumthetho obalulekileyo kakhulu weRiphabliki yaseMzantsi Afrika. Unika isiseko somthetho woluntu weriphabliki, uchaza amalungelo nemisebenzi yabemi bayo, nokunika ingcaciso yokwakhiwa kukarhulumente. Umgaqo-siseko wangoku, wesihlanu welizwe, wayilwa kulonyulo lwasePalamente lwango 1994 ngethuba lolonyulo lwaseMzantsi Afrika jikele ngo 1994. Wabhengezwa nguMongameli-mbuso uNelson Mandela ngomhla we-18 Disemba 1996 waza waqalisa ukusetyenziswa ngomhla wesi-4 Februwari 1997, wabe uthatha indawo yomgaqo-siseko wexeshana ka 1993.

Ukususela ngo 1996, kwenziwa ulungiso loMgaqo-siseko ngokwenziwa kolungiso lwemithetho elishumi elinesixhenxe. Umgaqo-siseko ngokusesikweni unesihloko esithi “uMgaqo-siseko weRiphabliki yaseMzantsi Afrika, ka 1996.” Ngaphambili wawubalelwa njengoMthetho wePalamente—Umthetho ongu Nomb. 108 ka 1996—kodwa, ukususela ekuVunyelweni ngokuSesikweni kweMithetho yoMgaqo-siseko, akukho namnye kuwo okanye imithetho yolungiso lawo esele ibalelwe kumanani omthetho.

## WAZI UMGAQO-SISEKO WAKHO-WAZI AMALUNGELO WAKHO

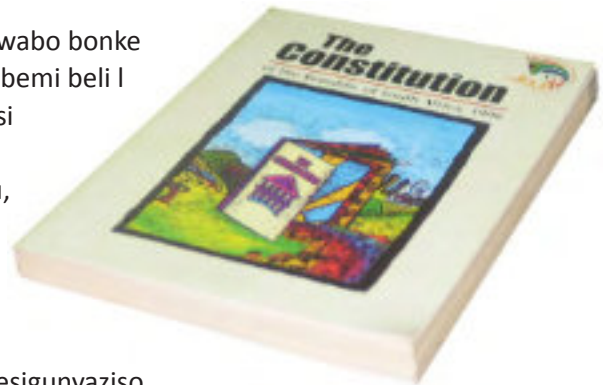
---

### Isahluko 1: Ukufumanisa amalungiselelo woMgaqo-siseko

Ukumiselwa kwamalungiselelo weendlela zobuchule beengqiqo ezisekelwe phezu koMgaqo-siseko. Isahluko 1 sigxininisa ukubaluleka kakhulu koMgaqo-siseko, amalungelo kunye nemisebenzi ekufuneka yenziwe ngabemi beli lizwe, kunye neenkcazelo ngomhobe wesizwe, iflegi yesizwe kunye neelwimi ezisetyenziswayo zelizwe lethu.

### Isahluko 2: USomqulu waMalungelo

USomqulu waMalungelo unika ingcaciso yamalungelo wabo bonke abemi beli lizwe, kuquka namalungelo wabo bangengobemi beli lizwe. Isahluko 2 soMgaqo-siseko yintsika yedemokhrasi yaseMzantsi Afrika. Ikhusele kwaye inike ingqinisekiso yeenqobo ezisesikweni zedemokhrasi zesidima soluntu, ngokulinganayo, kunye nenkululeko.



### Isiqendu 3: Urhulumente wentsebenziswano

Urhulumente wentsebenziswano usetyenziswa ngokwesigunyaziso somthetho wamacandelo ama-3 karhulumente okt. licandelo liarhulumente wesizwe, wommandla kunye nephondo okanye (uMasipala).

### Isahluko 4: IPalamente

IPalamente imisela imithetho kwaye yongamela inyathelo elithathwa ngurhulumente. Ukwakhiwa kwePalamente, iquletha iNdlu yoWiso-mthetho yeSizwe; kunye neBhunga laMaphondo leSizwe; kunye neBhunga laMaphondo leSizwe. Ngaphezu koko, esi Sahluko sinika izikhokelo zomgaqo-siseko zowiso-mthetho wesizwe okanye inkqubo yokulungelelaniswa komthetho wesizwe kunye nokumiselwa komthetho

### Isahluko 5: Umongameli-mbuso kunye neSigqeba soMbuso

Uchaza iSigqeba soMbuso seSizwe, ulonyulo kunye nexesha lika Mongameli-mbuso lokusebenza e-ofisini, kunye namagunya kaMongameli-mbuso. UMongameli-mbuso yiNtloko yasebuRhulumenteni kunye neSigqeba soMbuso seSizwe, nonoxanduva lolawulo lwelizwe.

### Isahluko 6: Amaphondo

IRiphabliki inamaphondo ali-9: IMpuma Koloni; Free State; Gauteng; KwaZulu-Natal; Limpopo; Mpumalanga; Northern Cape; North West; kunye neNtshona Koloni. Ngalinye kuwo lineNdlu yoWiso-mthetho kunye neSigqeba soMbuso sePhondo. Amagunya kunye nokwakhiwa kwendlu yowiso-mthetho yephondo, kunye nesigqeba sombuso, achazwe kwisahluko 6.

### Isahluko 7: Urhulumente woMmandla

Uhlangabezana nokwakhiwa, amagunya kunye nemisebenzi karhulumente wommandla kunye noomasipala bakhe.

### **Isahluko 8: Iinkundla kunye nolawulo lobulungisa**

Iinkundla zisebenzisa ulawulo lobulungisa eMzantsi Afrika. Uluhlu lwesi sahluko luhambelana nesigunyaziso senkundla yoMgaqo-siseko, Eyona Nkundla iPhakamileyo yeZibheni yeSizwe, Iinkundla eZiphakamileyo, iinkundla zoomantyi kuquka neKhomishoni yeNkonzo yaMacandelo eNkundla Jikelele, kunye naBasemagunyeni beZotshutshiso beSizwe.

### **Isahluko 9: Amaziko axhasa idemokrasi yomgaqo-siseko**

Amaziko amathandathu azimeleyo aseburhulumenteni omeleza idemokrasi yomgaqo-siseko, okt. Umkhuseli woluNtu, iKhomishoni yaMalungelo woluNtu, iKhomishoni yoKukhuthaza uKhuseleko lwaMalungelo weNkcubeko, iiNdawo zaSekuhlaleni Zenkolo kunye neelwimi ezisetyenziswayo, iKhomishoni yoKulingana ngokweSini, uMhloli-zincwadi Jikelele kunye neKhomishoni yoLonyulo.

### **Isahluko 10: ULawulo loluntu**

Inkqubo yolawulo loluntu, imithetho-siseko yokulawula uluntu iquka ukukhuthazwa kweenqobo ezisesikweni zomsebenzi wobugcisa ezikumgangatho ophezulu, ngokusebenzayo, ezoqoqosho nokusetyenziswa kakuhle kwezinto eziluncedo kubantu abasebenzela urhulumente. Uluntu kufuneka lukhuthazwe ekuzibandakanyeni ekumiselweni komgaqo-nkqubo.

### **Isahluko 11: Iinkonzo zoKhuseleko**

Iinkonzo zoKhuseleko ziqukatha iqela loKhuseleko kuzwelonke, amapolisa kunye neenkonzo zeqela leengqondi. . Eyona njongo iphambili yeenkonzo zoKhuseleko zesizwe kukukhusela nokuthintela iRiphabliki, ukukhusela nokuthintela, ukulwa nokwenza uphando ngexesha.

### **Isahluko12: Iinkokheli zeMveli**

Iinkokheli zemveli kunye nomthetho wesiko zamkelwe ngokusesikweni nguMgaqo-siseko.

### **Isahluko13: Izimali**

Esi sahluko sichaza Inxowa-mali yeNgeniso yeSizwe, apho kuthi kwenziwe uhlalo lwabiwo-mali okanye lusetyenziswe kuphela ngokuhambelana noMthetho wePalamente. Oku kunika uxanduva kuwo one amacandelo karhulumente ekulawuleni izimali zikarhulumente ngendlela engafihlisiyo noxanduva lokunika inkcazelo. UNondyebo weSizwe wongamela iinkqubo zohlalo lwabiwo-mali kunye nokuqinisekisa ukuthobelana nemithetho yeenkqubo zohlalo lwabiwo-mali.

### **Isahluko 14: Amalungiselelo Jikelele**

Uluhlu lwemithetho yolungiselelo Jikelele malunga nezivumelwano zehlabathi kunye nomthetho wehlabathi ngokusesikweni, uthethathethwano nokusayina zonke izivumelwano zehlabathi..

## IMIBUZO YENGXOXO

---

1. Ingaba uMgaqo-siseko wayilwa nini waza wamkelwa nini??

---

---

---

---

2. Yintoni amalungelo oluntu?

---

---

---

---

3. Yintoni “imfundo esisiseko” njengokuba kuchaziwe kwiCandelo 29 loMthetho oYilwayo waMalungelo ?

---

---

---

---

4. Umthetho oYilwayo waMalungelo unika isingqiniso “kuwonkewonke” kuninzi lwamacandelo wawo. Ngubani uwonkewonke?

---

---

---

---

5. Ingaba umda welungelo uyakuba ngowobulungisa nini na phantsi kwecandelo 36 loSomqulu waMalungelo?

---

---

---

---

6. Ingaba siwakhuthaza kwaye siwakhusela njani amalungelo woMgaqo-siseko eMzantsi Afrika?

---

---

---

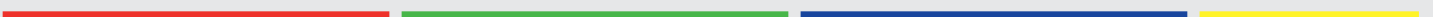
---

# IPALAMENTE YEPHONDO LENTSHONA KOLONI



## ISAHLUKO 6

AMAZIKO KARHULUMENTE  
AXHASA IDEMOKHRASI  
YOMGAQO-SISEKO





## AMAZIKO KARHULUMENTE AXHASA IDEMOKHRASI YOMGAQO-SISEKO

### AMAZIKO ESAHLUKO 9

Umgaqo-siseko waseMzantsi Afrika ubandakanya ukubaluleka kakhulu koMgaqo-siseko kunye nomthetho wolawulo. Wonke umntu waseMzantsi Afrika, kuquka norhulumente kufuneka alandele uMgaqo-siseko. Ngokunjalo, yonke imithetho ilandela uMgaqo-siseko. Umgaqo-siseko ukwaqulatha aMalungelo woMthetho oYilwayo, nacaciswa njengee “ntsika zeDemokhrasi yaseMzantsi Afrika.” Umgaqo-siseko unyanzelisa ukuba uRhulumente “ahloniphe, akhusele, akhuthaze kwaye afezekise aMalungelo woMthetho oYilwayo”.

Ukuqonda okokuba ukhuseleko kunye nokukhuthaza amalungelo woluntu akunakuyekelwa ebantwini okanye kurhulumente, iSahluko 9 soMgaqo-siseko siqulatha amaziko asixhenxe wesizwe azimeleyo, ngokuphathelele noMgaqo-siseko nasemthethweni kuphela, nomsebenzi wawo ikukwenza utshintsho kuluntu lwethu, nokukhusela ukubaluleka kwamalungelo wabo bonke abemi bendawo abazondelele kuMgaqo-siseko. Amaziko eSahluko 9, najngengokuba ngokwesiqhelo ebizwa ngokuba, ‘ziindlela zobuchule obusetyenziswayo’ boyilo lokuqinisekisa ukuba urhulumente wenza umsebenzi wakhe ngokufanelekileyo kwaye uziphatha ngokuhambelana noMgaqo-siseko.

La maziko eSahluko 9, nanengokuba ixesha elininzi ebizwa ngokuba ‘ziindlela zobuchule obusetyenziswayo ezikhuselekileyo’ eziyilelwe ukuqinisekisa ukuba urhulumente uwenza kakuhle umsebenzi wakhe kwaye uziphethe ngokuhambelana noMgaqo-siseko. Amaziko eSahluko 9 azimele ngokunokwawo hayi phantsi korhulumente kwaye kufuneka anike ingxelo ePalemente kubekanye ngonyaka ubuncinane.

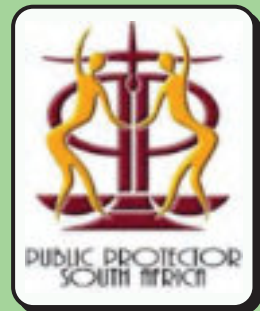
#### UMKHUSELI WOLUNTU

Umkhuseli woluNtu ufumana kwaye aphande ngezikalazo ezisuka eluntwini ngokuchasene nee-arhente okanye namagosa karhulumente, kwaye unegunya lokunika ingcebiso yokuthathwa kwenyathelo elifanelekileyo. Iinkonzo zoMkhuseli woluNtu zifumaneka ngaphandle kwentlawulo kuwo wonke umntu kwaye ukuba ufake isikalazo igama lakho liyakuthi ligcinwe liyimfihlelo. Umkhuseli woLuntu ulandela uMgaqo-siseko nemithetho kuphela kwaye uzimele ngokunokwakhe hayi phantsi korhulumente kunye naliphi na iqela lezopolitiko. Akukho mntu okanye isebe laseburhulumenteni linokuphazamisana nomsebenzi we-ofisi yoMkhuseli woLuntu.

Ifowuni: 021 423 8644 (Ummantla)

Ifowuni: 012 366 7000 (I-Ofisi eyiNtloko)

Inombolo yasimahla Toll free number: 0800 112 040 Iwebhusayithi: [www.pprotect.org.za](http://www.pprotect.org.za)



#### IKHOMISHONI YAMALUNGELO OLUNTU YASE MZANTSI AFRIKA

IKhomishoni yamalungelo woluNtu inomsebenzi wokuqinisekisa ukuba iingqiqo ezikhankanywa kuMgaqo-siseko zivuyelelwa ngabo bonke abantu baseMzantsi Afrika.

Bakwenza oku ngokuthi

- Bathethe ngamalungelo oluntu kunye nokufumana iindlela zokulungisa izenzo zokungananzi amalungelo wabantu kunye nokufumana iindlela zoncendo lonyhasho olunjalo
- Bahlalutye kwaye babek'isoelibukhali yendlela efanelekileyo ekuqwalaselwa ngayo amalungelo oluntu eMzantsi Afrika.
- Ukukhankanya ukuqonda ngemiba yamalungelo oluntu kwiriphabliki jikelele
- Ukunika uqeqesho nokufundisa uwonkewonke ngamalungelo oluntu..

Ifowuni: 0214262277(Ummantla)

Ifowuni: 0120118773600 (I-ofisi eyiNtloko) Iwebhusayithi: [www.sahrc.org.za](http://www.sahrc.org.za)



## AMAZIKO KARHULUMENTE AXHASA IDEMOKHRASI YOMGAQO-SISEKO

### IKHOMISHONI YOKULINGANA NGOKWESINI

IKhomishoni yoKulingana ngokweSini idlala indima yokuhambela phambili malunga nokulingana ngokwesondo kuwo onke amacandelo woluntu jikele kunye nokwenza izindululo zawo nawuphi na umthetho ochaphazela imeko yamabhinqa. Ikhomishoni kufuneka ikhuthaze intlonipho yokulingana ngokwesini kunye nokhuseleko, uphuhliso nokufezekisa ukulingana ngokwesini. Injongo yeKhomishoni kukwenza utshintsho kuluntu “ngokuveza izenzo, imithetho kunye nemigaqo-nkqubo yocalulo ngokwesini” Ixhasa utshintsho lwezimo neengcinga zabantu malunga nemiba yesini, kwaye izama ukubonakalisa ukuba amalungelo wamakhosikazi ngamalungelo abalulekileyo kakhulu eluntwini.



Nangona umthetho weKhomishoni uthethelela icala lamabhinqa jikelele, uqwalasela ngokukodwa amabhinqa ahlelelekileyo - abo bahla kwiindawo ezisemaphandleni nezo zizidolophana

Ifowuni: 021 426 4080 (Ummandla)

Ifowuni: 0114037182 (I-ofisi eyiNtloko) Iwebhusayithi: [www.cge.org.za](http://www.cge.org.za)

### UMHLOLI-ZINCWADI JIKELELE

UMhloli-zincwadi Jikelele unoxanduva lokwenza uphicotho nokunika ingxelo ngee-akhawunti, iinkcukacha zezimali kunye nolawulo lwezimali zawo onke amasebe aseburhulumenteni wesizwe nawephondo nawolawulo; bonke oomasipala; kwaye kufuneka uMhloli-zincwadi Jikelele enze uphicotho lwalo naliphi na iqumrhu okanye iqumrhu elinika inkcazelo ngokwemfuneko yomthetho wesizwe kunye nowephondo.



UMhloli-zincwadi Jikelele angenza uphicotho kwaye anike ingxelo ngee-akhawunti, iinkcazelo ngezimali kunye nolawulo lwezimali kulo naliphi na iziko elifumene uncedo lwengxowa-mali olusuka kwiNgxowa-mali yeNgeniso yeSizwe okanye kwiNgxowa-mali yeNgeniso yePhondo okanye kaMasipala; okanye naliphi na iziko eligunyazisiweyo ngokwemiqathango yawo nawuphi na umthetho wokufumana imali ngenjongo yokusetyenziswa kwayo ekuncedeni uluntu.

Ifowuni: 021 528 4100 (Ummandla)

Ifowuni: 0124268000 (I-ofisi eyiNtloko) Iwebhusayithi: [www.agsa.co.za](http://www.agsa.co.za)

### IKHOMISHONI YOKUKHUTHAZA KUNYE NOKUKHUSELA AMALUNGelo WEZENKCUBEKO, EZENKOLO KUNYE NEENDAWO ZASEKUHLENI ZEELWIMI

Imisebenzi yeKhomishoni yile:

- Ukukhuthaza imbeko kunye nokuqhubela phambili ukukhuseleko lwamalungelo enkubeko, ezenkolo kunye neendawo zasekuhlaleni zeelwimi;
- Ukwenza uxolo, ubuhlobo, ubuntu, ukunyamezela kunye nobambiswano kuzwelonke phakathi nakwiindawo zasekuhlaleni zeelwimi, inkubeko nezenkolo, ngokwesiseko esisemgangathweni, ngaphandle kocalulo nokuzimanyanaisa nabanye ngokukhululekileyo;
- Ukukhuthaza ilungelo loluntu lwasekuhlaleni ukuze luqalise ukuyila imbali yalo malunga nokungajongelwa ntweni kwelifa labo lemveli.



Ifowuni: 011 537 7600 (Ummandla)

Ifowuni: 0113589100 (I-Ofisi eyiNtloko) Iwebhusayithi: [www.crlcommission.org.za](http://www.crlcommission.org.za)



### IKHOMISHONI YOLONYULO EZIMELEYO (IEC)

IKhomishoni yoLonyulo eZimeleyo inoxanduva lokulawula ulonyulo lwesizwe, kwiphondo nakumaqumrhu omthetho kamasipala ngokuhambelana nomthetho wesizwe nokuqinisekisa ukuba olo lonyulo lwenziwa ngokufanelekileyo nangokukhululekileyo. Kufuneka ibhengeze iziphumo zolo lonyulo kwixesha elimiselweyo ngokomthetho wolawulo wesizwe.



Nangona ifumana uncedo lwengxowa-mali kurhulumente kwaye inoxanduva lokunika inkcazelo kwiPalamente, i-IEC izimimele ngokwayo ayikho phantsi korhulumente.

Icandelo 5 loMthetho ka 1996, weKhomishoni yoLonyulo ufuna ukuba u-IEC yenze oku:

- Ukuhlnganisela nokucina irejista yamaqela ezopolitiko;
- Ukuqalisa nokukhuthaza ukwenziwa kophando lwemicimboi yolonyulo;
- Ukukhuthaza ukufundiswa kwabavoti;
- Ukutyunjwa kwabaphathi bolawulo abafanelekileyo kulo naliphi na icandelo likarhulumente ukuze sibenokukhokela ulonyulo xa kuyimfuneko;
- Ukuhlolwa rhoqo kwemithetho yolonyulo kunye nemithetho yolonyulo ecetywayo, nokwenza izindululo.

ifowuni: 021 910 5700 (Ummandla) Tel: 0126225700

(I-Ofisi eyiNtloko) Iwebhusayithi: [www.elections.org.za](http://www.elections.org.za)

### ISIGQEBA SOMBUSO SOLAWULO LOQHAGAMSHELWANO ESIZIMELEYO (ICASA)

(Ukuchongwa kwelinye iziko lokukhuthaza idemokrasi) I-ICASA sisigqeba sombuso esizimeleyo nesinomsebenzi wolawulo losasazo ngokwentando yoluntu, nokuqinisekisa ubulungisa neembono ezohlukeneyo zoluntu lwaseMzantsi Afrika ngokubanzi.



Abasemagunyeni bakhupha amaphepha-mvume othungelwano ngefowuni nababoneleli ngeenkono zosasazo, isigunyaziso ukuthobelana nemithetho kunye nemimiselo, ukukhusela abathengi kwizenzo ezingafanelekanga zoshishino kunye neenkono ezingekho mgangathweni, simamela kwaye sithathe izigqibo malunga neempikiswano zokungaboni ngasonye kunye nezikhalazo ezifumanekileyo ezimalunga namaphepha-mvume ukulawula kunye nokusetyenziswa kakuhle kweSpectrum samaza kanomathotholo.

Ifowuni: 0214319800(Ummandla)

Ifowuni: 0115663000/3001(I-Ofisi eyiNtloko) Iwebhusayithi: [www.icasa.org.za](http://www.icasa.org.za)



# IPALAMENTE YEPHONDO LENTSHONA KOLONI



## ISAHLUKO 7

INKQUBO YOHLAHLA  
LWABIWO-MALI





## INKQUBO YOHLAHLA LWABIWO-MALI

---

### Yintoni uhlahlo lwabiwo-mali?

Uhlahlo lwabiwo-mali kukubhalwa phantsi kwesicwangciso sonyaka sezimali zikarhulumente. Uhlahlo lwabiwo-mali luchaza yonke inkcitho-mali ebonakalayo kunye nomvuzo wexesha elithile. Zininiz izigqibo ezithathwayo nezibandakanyekayo kwaye kufuneka kubuzwe imibuzo emininzi kwaye iphendulwe ngexesha lenkqubo yohlahlo lwabiwo-mali. Omnye wemibuzo ekufuneka ubuziwe umalunga nokufumaneka kwezinto eziluncedo kunye nemfuneko yokongezwa kwazo.

### Ingaba urhulumente uyisebenzisa njani imali?

ENTshona Koloni kukho iNdlu yoWiso-mithetho kunye namaSebe kaRhulumente ali-13. Isahlulo sohlahlo lwabiwo-mali kufuneka sabelwe isebe ngalinye kula masebe. Olu lwabiwo-mali luchazwa ngemiba ephambili karhulumente njengoko kuchaziwe kumagqabantshintshi weNtetho yePhondo yeNkulumbuso. Imiba ephambili karhulumente waseNtshona Koloni ekusetyenziswa kuyo inkcitho-mali iquka uPhuhliso loluNtu, ezeMpilo, uKhuseleko loluNtu nezeMfundo.

### Iimpawu zohlahlo lwabiwo-mali olulungileyo

<b>Ukuthatha inxaxheba:</b>	Kuquka uninzi lwabantu kangangoko
<b>Ngokubanzi:</b>	Kuquka umbutho wonke ngokupheleleyo
<b>Imigangatho:</b>	Ngokusekelwe ekumiselweni kwemigangatho yokuhamba komsebenzi.
<b>Ukubanokumelana nemeko ethile:</b>	Ukuvumela utshintsho ngokweemeko
<b>Ukunika ingxelo yokwenziweyo:</b>	Ukwenziwa rhoqo koqwalaselo lokuhamba komsebenzi

### Umjikelo woHlahlo lwabiwo-mali loNyaka

Izigaba ezine zingachongwa kumjikelo wohlahlo lwabiwo-mali lonyaka.

**UKUYILA:** ISebe leZimali okanye uNondyebo unika izikhokelo zokusetyenziswa kwemali kumasebe kunye nee-arhente Amasebe angenisa uyilo lohlahlo lwabiwo-mali, uthethathethwano nokuthatha isigqibo sokugqibela kwesigqeba sombuso

**UWISO-MTHETHO:** Ukwandlalwa komcimbi wohlahlo lwabiwo-mali kwindlu yowiso-mithetho ngoMatshi Ingqiqo yePalamente Ikomiti(ii) yamkelwe yiPalamente, ukwenziwa kolungiso okanye ukugatywa kohlahlo lwabiwo-mali

**OKUPHUNYEZIWEYO:** Ukwenziwa kwesahlulo sengxowa-mali yenkcitho yamamasebe yokuphumeza imisebenzi ekufuneka yenziwe Isebe lezimali liqwalasela inkcitho-mali Yenza isicelo sokuvunyelwa kohlengahlengiso lolwabiwo-mali ukuba kuyimfuneko

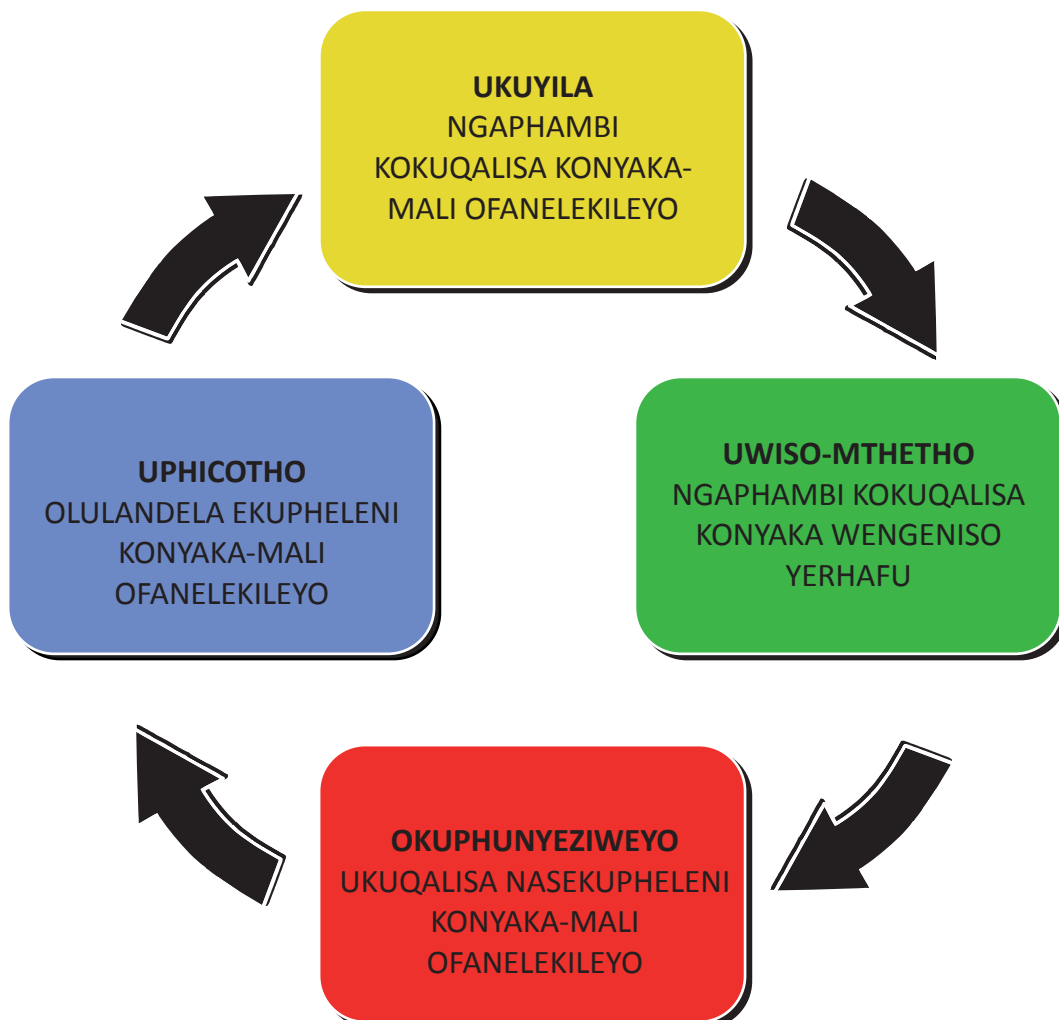
**UPHICOTHO:** Elona ziko likhulu lophicotho lihlalutya ii-akhawunti zesebe kunye neengxelo zoPhicotho lokuhamba komsebenzi ezipapashwe kwaye zahlowa yiPalamente.

## INKQUBO YOHLAHLA LWABIWO-MALI

### Uluntu lungazibandakanya njani?

Eyona njongo iphambili yePalamente yePhondo leNtshona Koloni kukuquzelela intatho-nxaxheba yoluntu nokubandakanyeka kwabantu kwimisebenzi kunye neenkqubo zayo. Ngoko ke uluntu luvumekekile ukuba luzimase iintlanganiso zekomiti kunye neengxoxo-mpikiswano zePalamente yePhondo leNtshona Koloni. Uluntu lunako nokuzimasa imiboniso yeenkcazelo -ezimalunga nevoti yohlala lwabiwo-mali, kunye neeNgxelo zoNyaka ezimalunga nohanjiso lweenkonzo.

Inxalenye yendima edlalwa yiMfundiso yoluntu kunye neCandelo loKufikelela kweli Phulo eBantwini kunye neCandelo leWCPP loKuziswa kwalo eLuntwini ukwazisa abemi balapha ngendlela abanokuzibandakanya ngayo kunye nokubenefuthe kwiinkqubo nemithetho yokulawulwa kwabo ekuphileni kwabo ebomini. Imfundiso yoluntu kunye neCandelo loKufikelela kweli Phulo eBantwini kukuquzelela iindibano zocweyo eziyimfundiso kunye nemisebenzi eyenziwa kwiphondo jikelele.



## IMIBUZO YENGXOXO

1. Kutheni lubalulekile uhlahlo lwabiwo-mali lukarhulumente?

---

---

---

---

---

---

---

---

---

---

---

---

---

---

---

---

---

---

---

---

---

---

---

2. Kutheni urhulumente esenza ulungiselelo lohlahlo lwabiwo-mali olutsha rhoqo ngonyaka?

---

---

---

---

---

---

---

---

---

---

---

---

---

---

---

---

---

---

---

---

---

---

---

3. Zeziphi iindlela zobuchule obusetyenziswayo ukuqinisekisa ukuba uhlalo lwabiwo-mali lwenziwa ngokufanelekileyo kwaye izimali zisetyenziswa ngendlela eyiyo?

---

---

---

---

---

---

---

---

---

---

---

---

---

---

---

---

---

---

---

---

---

---

---

AMANQAKU



Ruled writing area with horizontal lines.

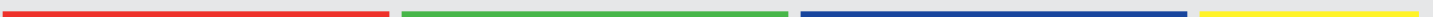


# IPALAMENTE YEPHONDO LENTSHONA KOLONI



## IS AHLUKO 8

INKQUBO YEENGXELO ZONYAKA





## ZIINTONI IINGXELO ZONYAKA ZAMASEBE?

---

Iingxelo zonyaka zezona zixhobo zingundoqo zokunika ingxelo zamasebe ukuze anike inkcazelo ngokuchasene nezijoliso zokuhamba komsebenzi kunye nohlahlo lwabiwo-mali oluchazwe kwizicwangciso zobuchule bawo obusetyenziswayo. Iingxelo zonyaka kufuneka ziqulathe iinkcukacha ezimalunga nohanjiso lweenkonzo, ukongeza kwinkcazelo ngezimali kunye nengxelo yophicotho.

Isicwangciso sobuchule kunye nohlahlo lwabiwo-mali lwesebe zibonwa njengamaxwebhu angumkhombandlela wokuqhubela phambili. La maxwebhu achaza ukuba ingaba amasebe ajonge ukwenza ntoni na kunye nendlela ayakuthi asebenzise ngayo izimali ngonyaka-mali olandelayo. . Iingxelo zonyaka zibonwa njengamaxwebhu anika umkhombandlela wokusele kwenziwe ngaphambili, nanjengokuba enika iingxelo zokuhamba komsebenzi ekupheleni konyaka-mali.

### **Kutheni aMasebe wePhondo engenisa iingxelo zoNyaka kwiPalamente yePhondo?**

Ukuze kuququzelelwe ukwenziwa kolongamelo lukaRhulumente wePhondo yiPalamente yePhondo, icandelo 33(3)(b) loMgaqo-siseko lifuna ukuba “Amalungu weBhunga leSigqeba soMbuso sePhondo anikezele zonke iingxelo zesiqhelo ngokupheleleyo ezimalunga nemiba ephantsi kolawulo kwiNdlu yoWiso-mithetho. “Ngaphambi konyaka wango 2000 zange kwenziwe ulongamelo malunga nokuhamba komsebenzi wohanjiso lweenkonzo ezingezizo ezezimali kwaye amasebe ondlala imicimbi yeengxelo zawo zophicotho neenkcazelo ngezimali kuphela.

Ngokwecandelo 65 le PFMA uMphathiswa wePhondo onoxanduva lwesebe okanye iqumrhu likarhulumente kufuneka azise umcimbi ozakwandalwa wengxelo yonyaka ngaphambili kwiNdlu yoWiso-mthetho kwixesha lenyanga enye emveni kokuba iGosa elinika inkcaza okanye iSigqeba soMbuso esinika iNkcaza malunga nesebe okanye iqumrhu likarhulumente lifumene ingxelo yophicotho. Umphathiswa wePhondo othe wasilela ukuza nomcimbi oza kwandalwa ngaphambili nengxelo yonyaka kwixesha leenyanga ezintandathu emveni kokuphela konyaka-mali kufuneka azise ngaphambili ingcaciso ngembalelwano kwiNdlu yoWiso-mthetho achaze izizathu zokuba kutheni ingxelo izingondlalwa ngaphambi kwepalamente.

### **Indima yoMhloli-zincwadi Jikelele**

UMhloli-zincwadi Jikelele liziko likarhulumente ngokwesiqendu 9 soMgaqo-siseko weRiphabliki yaseMzantsi Afrika. UMhloli-zincwadi Jikelele waseMzantsi Afrika uzimele, ukulandela uMgaqo-siseko nokunika inkcazelo kwiNdlu yoWiso-mthetho yeSizwe. ICandelo 188 loMgaqo-siseko lichaza ukuba uMhloli-zincwadi Jikelele kufuneka aphicothe kwaye anike ingxelo yee-Akhawunti, iinkcazelo ngezimali kunye nolawulo lwezimali zawo onke amasebe wephondo nawesizwe, oomasipala kunye nalo naliphi na elinye iziko ngokwemfuneko yomthetho wephondo nowesizwe. Emveni koko uMhloli-zincwadi Jikelele ufaka iingxelo zophicotho kwiPalamente yePhondo

### **Indima yeeKomiti eZisisigxina kunye neKomiti yee-Akhawunti zikaRhulumente**

IKomiti yee-Akhawunti zikaRhulumente idlala indima yobunkokheli yemicimbi eza kwandalwa ngeengxelo zonyaka. Iikomiti ezisisigxina kananjalo kufuneka zixhase umsebenzi weKomiti yee-Akhawunti zikaRhulumente kunye nokudlala iindima ezinika inkxaso. Iikomiti ezisisigxina zimiselwe ngengqiqo yolongamelo lohanjiso lweenkonzo kunye nokwenziwa kwemisebenzi yamasebe namaqumrhu awohlunekeyo asesikhundleni esifanayo. Iikomiti ezisisigxina zidlala indima ebalulekileyo yokugcina amasebe karhulumente enoxanduva nokuqinisekisa ukuba abonelela ngohanjiso lweenkonzo ngokwezithembiso ezenziweyo kwizicwangciso zobuchule kunye nohlahlo lwabiwo-mali lwazo.

### **Indima yoLuntu**

ULuntu lunelunegelo lokuzimasa umanyelo lwezimvo zoluntu malunga nengxelo yonyaka njengenxalenye yenkqubo yolongamelo. Eyona njongo iphambili yokubanjwa komanyelo lwezimvo zoluntu kukufumana iinkcukacha ezithe vetshe kuMphathiswa wePhondo, iGosa eliNika iNkcaza kunye namaGosa karhulumente. Ikwalthuba lokuba ikomiti ezisisigxina icele izimvo kumahlakani angabantu basekuhlaleni kunye neengcaphephe ngomba otshis'ibunzi.

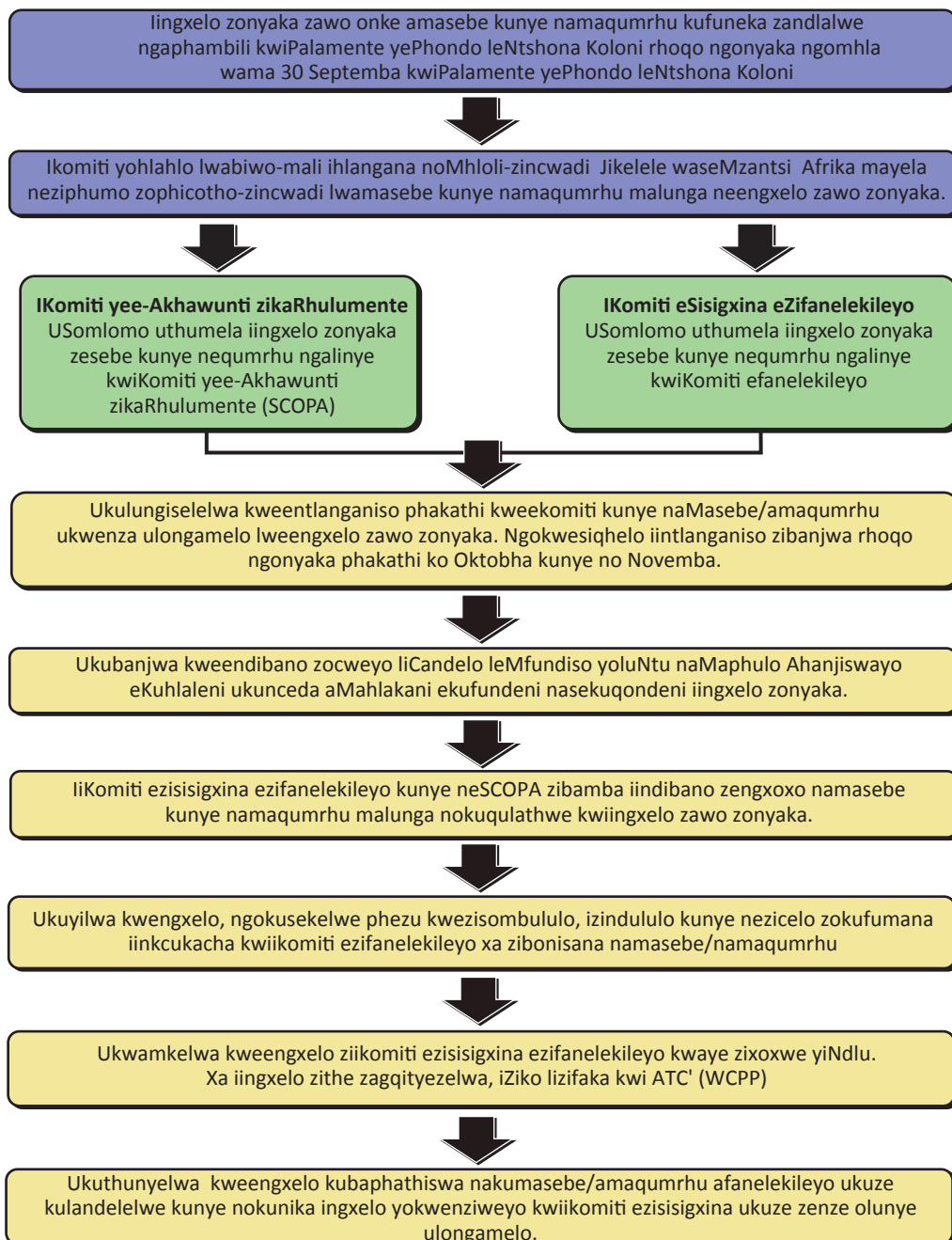
## ZIINTONI IINGXELO ZONYAKA ZAMASEBE?

likomiti ezisisigxina zinokusebenzisa ezi ndlela zobuchule zilandelayo ukuqinisekisa ukuthathwa kwenxaxheba kule nkqubo kangangoko:

- likomiti ezisisigxina zingafuna ukuba bonke abathathi-nxaxheba bangavumi ukunika izimvo malunga neenkukacha eziqulathwe kwiingxelo zonyaka ekusaxoxwayo ngazo.
- Ikomiti ezisisigxina ingagqalisa kwingxoxo mpikiswano ngokucela abathathi-nxaxheba ukuba bachaze imiba ethile enxulumene nemisebenzi yequmrhu ekusaxoxwayo ngayo okanye ephakanyisiweyo kwingxelo yonyaka.
- likomiti ezisisigxina zisenokudibana nemibutho ethile, amaziko, okanye iingcaphephe ngomba otshis'ibunzi ukuze zithathe inxaxheba kumanyelo zimvo zoluntu. .

likomiti ezisisigxina zinganika uluhlu lwemiba yokuqala ethe yachongwa kuphando lwazo kwaye zicele ukuba uluntu lunike izimvo zalo ngokubanzi malunga nale miba.

### Ixesha leeNngxelo zoNyaka kwiPalamente yePhondo leNtshona Koloni



## IMIBUZO YENGXOXO

---

1. Kutheni kubalulekile ukuba amasebe karhulumente anike inkcazelo ngeengxelo zawo zonyaka?

---

---

---

---

---

---

---

---

---

---

---

---

---

---

---

---

---

---

---

---

---

---

---

2. Zeziphi iinkcukacha eziqokwa kwingxelo yonyaka?

---

---

---

---

---

---

---

---

---

---

---

---

---

---

---

---

---

---

---

---

---

---

---

---

---

3. Ngokulwalo lwakho, yeyiphi eyona ndawo ibalulekileyo yengxelo yonyaka?

---

---

---

---

---

---

---

---

---

---

---

---

---

---

---

---

---

---

---

---

---

---

---

---

---

# AMANQAKU



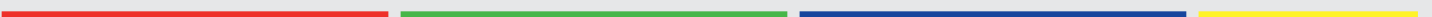
A series of horizontal lines for writing, spaced evenly down the page.

# IPALAMENTE YEPHONDO LENTSHONA KOLONI



## ISAHLUKO 9

AMAXWEBHU EZIKHALAZO







## YINTONI UXWEBHU LWESIKHALAZO?

---

Uxwebhu lwesikhalazo sisibongozo, sisicelo, kukunika inkcazelo, okanye ukufaka uxwebhu oluthunyelwa ngumfaki-sikhalazo kwiKomiti yaMaxwebhu eZikhalazo, kwaye singaba lolu hlobo:

- a) Isikhalazo esisodwa, nesifakwe ngumntu omnye ongumfaki-sikhalazo malunga nesikhalazo okanye isicelo esithile a;
- b) Isikhalazo seqela labantu ngokuhlangeneyo, nalapho kuqokelelwe utyikityo lweqela lenani labafaki-zikhalazo malunga nesikhalazo okanye isicelo esithile;
- c) Uxwebhu lwesikhalazo seqela, ukufakwa kwamaxwebhu ngumntu omnye okanye liqela lenani labafaki-zikhalazo malunga nesikhalazo okanye isicelo esifanayo ngokubanzi; okanye
- d) Uxwebhu lwesikhalazo esisuka kumbutho womanyano, apho kufakwe uxwebhu lwesikhalazo somntu omnye okanye liqela lomanyano okanye isigunyaziso somntu omnye esisuka embuthweni womanyano, malunga nesikhalazo okanye isicelo esithile.

### Iindidi zaMaxwebhu eZikhalazo

Ngokwesiqhelo zimbini iindidi zamaxwebhu ezikhalazo, ezibizwa ngokuba zizikhalazo eziluhlobo olulodwa kunye namaxwebhu wezikhalazo zoluntu okanye zesiqhelo. Uxwebhu lwesikhalazo esisodwa kuxa umntu efaka isicelo esithile okanye esenza isicelo sokufumana uncedo buqu kuRhulumente, nesiingagunyaziswanga ngokusemthethweni, njengokufumana umhlalaphantsi. Uxwebhu lwesikhalazo soluntu kuxa iqela labemi bendawo abaneemfuno ezifanayo befaka isicelo soncedo jikelele okanye ukulungiswa kweso sikhalazo.

### Iimfuneko zaMaxwebhu eZikhalazo ngokuSesikweni

- (1) Uxwebhu lwesikhalazo kufuneka:
  - a) sibe kwifomu emiselwe ngokusemthethweni;
  - b) sibhalwe ngolunye leelwimi ezisetyenziswa ngokusesikweni zephondo;
  - c) sisayinwe nguMfaki-sikhalazo ngamnye okanye, ukuba kufuneka njalo okanye ngesigunyaziso soMfaki-sikhalazo, ngomnye umntu egameni loxwebhu lwesikhalazo esifakiweyo; kwaye
  - d) sithunyelwe kuNobhala.
- (2) Uxwebhu lwesikhalazo kufuneka luchaze oku:
  - a) amagama nedilesi zoMfaki-sikhalazo ngamnye;
  - b) ingaba uMfaki-sikhalazo umele bani; kwaye
  - c) zeziphi ezinye iindlela, ezisetyenziswe ngumfaki-sikhalazo ukuba zikhona, ukuzama ukusombulula lo mba.

### Inkqubo yoKufakwa koXwebhu lweSikhalazo

- 1) Umfaki-sikhalazo kufuneka agcwalise iSihlomelo A, esikwi fomu ngokupheleleyo njengoko kuyimfuneko yokufaka uxwebhu lwesikhalazo sakhe.
- 2) Uxwebhu lwesikhalazo kufuneka lufakwe ngolu hlobo:
  - a. ngeleta ethunyelwe ngokhuseleko lwerejista;
  - b. luthunyelwe ngeposi kwiPalamente yePhondo lufakwe kwibhokisi etyunjiweyo;
  - c. nge imeyili kwidilesi ye-imeyili etyunjiweyo; okanye
  - d. ngokugcwalisa umhlathi ofanelekileyo kwi webhusayithi yePalamente yePhondo leNtshona Koloni (WCPP).
- 3) Umfaki-sikhalazo kufuneka agcwalise iSihlomelo A esikwifomu, njengokuba kubonakalisiwe kumgqaliselo ophantsi komnye woku (1), kufuneka kusayine umfaki-sikhalazo okanye nawuphi na omnye umntu ogunyazisiweyo ukuba enze njalo egameni lomfaki-sikhalazo.

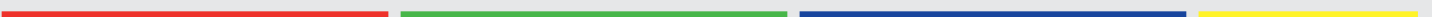
**NCEDA UQAPHELE:** Abafaki-zikhalazo kufuneka baqinisekise ukuba baqale bazama ukufumana zonke ezinye iindlela zoncedo kwezinye iindawo ukuze kusonjululwe isikhalazo ngaphambi kokuba bafake amaxwebhu ezikhalazo kwiNdlu yoWiso-mthetho yePhondo.



# IPALAMENTE YEPHONDO LENTSHONA KOLONI



## IS AHLUKO 10 AMANGENELO





## KUKUTHINI UKUFAKWA KWAMANGENELO?

Ukufakwa kwamangenelelo kukunika izimvo kukunika izimvo zomntu ngomlomo okanye ngembalelwano okanye zombutho malunga nokucetywa komthetho omtsha okanye umgaqo-nkqubo malunga nezindululo ezenziweyo ngembono yokuwuphucula.

### Afakwa njani amangenelelo?

Amangenelelo afakwa ngokuthunyelwa kwiPalamente yePhondo leNtshona Koloni malunga nawuphina umba wesiqhelo okanye umcimbi othile apho kuthe kwenziwa isimemo sokufakwa kwengenelelo. Ukufakwa kwamangenelelo kufuneka kwenziwe ngembalelwano okanye uchaze injongo yakho yokufaka isikhalazo ngomlomo. Ngoko ke kubhekiselwa kwikomiti ukuze ithathe isigqibo, nethi ithathe isigqibo sokuba ingaba kufuneka kumanyelwe ubungqina kusini na malunga nalo mba.

### Ingaba luqulatha ntoni iNgenelo elifakiweyo?

Ingenelo elifakiweyo kufuneka luqulathe ezi nkukacha zilandelayo :

- 1) Ingcaciso malunga nombala ongundoqo .
- 2) Imiba ephambili enxulumene nomthetho: Ingaba umba ochaziweyo uhambelana njani nowiso-mithetho lwangoku.
- 3) Intsusa yengxaki. Imiba ephambili echaziweyo malunga nombala ongundoqo. Ubungqina obuxhasa ingenelo elifakiweyo.
- 4) Isicelo esifakiweyo. Indlela ecetywayo yenkqubela phambili malunga nokuhlangabezana nale ngxaki.
- 5) Izisombululo zokugqibela okanye iziphumo ezilindelekileyo.

### Amangenelelo athunyelwa ku



**Ngembalelwano, kule dilesi**  
ilandelayo: UNobhala wePalamente  
yePhondo leNtshona Koloni  
PO Box 648, 8000



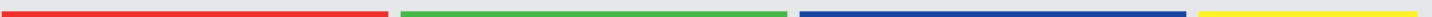
**Ezifakwa ngumntu ngokwakhe:**  
Ikhawuntala yokwamkela iindwendwe  
zePalamente  
7 WaleStreet  
CapeTown,8001



# IPALAMENTE YEPHONDO LENTSHONA KOLONI



IZINTO ZONCEDO  
OLONGEZELELWEYO







## ULUHLU LWAMAGAMA

---

**Umthetho** - Umthetho omiselwe yiPalamente yePhondo, okt. UMthetho ophunyezwe yiPalamente yePhondo, nekuvunyelwana ngawo ukuba usayinwe yiNkulumbuso kwaye upapashwe kwiPhepha-ndaba loMbuso lePhondo.

**Ulungiso lomthetho oyilwayo** - Ukwaziswa komthetho oyilwayo ukuze kutshintshwe igatya okanye amagatya oMthetho osetyenziswayo.

**Umthetho oYilwayo woHlahlo Lwabiwo-mali** - Umthetho oYilwayo unika isigunyaziso somthetho wokusetyenziswa kwezimali zikarhulumente okanye ukwenzela iindleko eziyimfuneko zaseburhulumenteni.

**Iintsika zecandelo likarhulumente** - Kubhekisela kwiSigqeba soMbuso, iCandelo leeNkundla kunye neNdlu yoWiso-mthetho kumgangatho wesizwe.

**Umthetho oYilwayo** - Umthetho oYilwayo wePalamente yePhondo okanye umthetho omtsha ocetyiweyo nothe waziswa kwiPalamente yePhondo.

**UHlahlo lwabiwo-mali** - Ukunika isiphumo soMthetho oYilwayo woHlahlo Lwabiwo-mali lonyaka kunye noQikelelo lweNkcitho-mali yalo, imigaqo-nkqubo yoluntu nezozoqosho. Luziswa ngaphambili kwiPalamente yePhondo kubekanye ngonyaka.

**Ivoti yoHlahlo lwaBiwo-mali** - Umba owodwa woHlahlo lwaBiwo-mali lwePhondo, obonakalisa isixa-mali esifunwa ngurhulumente wephondo ukulungiselela isebe ngalinye.

**Igqugula** - Onke amalungu wePalamente yePhondo wombutho othile weqela lezopolitiko. Amagqugula wombutho wezopolitiko ahlangani bucala, ngokwesiqhelo rhoqo ngeveki.

**Igumbi leNgxoxo** - Iholo ekuhlanganela kulo aMalungu wePalamente yePhondo ukuxoxa imicimbi yeNdlu.

**Umbhexeshi oyiNtloko** - Ilungu leqela lezopolitiko elinoxanduva lokuququzelela intatho-nxaxheba yeqela lezopolitiko kwiPalamente yePhondo. Ngokuhlangeneyo, ababhexeshi abaziintloko ngamanye amaxesha kuthiwa “ngababhexshi abaziiNtloko”.

**Igatya lomthetho** - Ikatya lomthetho elinenani elilodwa, okanye inxalenye yomthetho oyilwayo. Xa umthetho oyilwayo uthe wasetyenziswa njengoMthetho, amagatya omthetho wawo abizwa ngokuba ngamacandelo.

**Urhulumente wobumbano** – Umanyano okanye okanye ukumanyanani phakathi kwamaqela ezopolitiko amabini okanye nangaphezulu ngenjongo yolawulo lwelizwe, ngokwesiqhela ku xa iqela elinye lezopolitiko lingafumananga nani lifanelekileyo ngokobuninzi benani leevoti kulonyulo.

**Ingingqi yeLungu** -- Ummandla ngokwendawo elityunjelwe yona iLungu lePalamente yePhondo ngumbutho weqela lalo lezopolitiko.

**I-Ofisi yeLungu** - I-ofisi yeLungu lePalamente yePhondo leNtshona Kolini lommandla ngokwendawo elityunjelwe yona.

**Umgaqo-siseko** - Owona mthetho mkhulu wolawulo welizwe.

**Inkundla yezoMgaqo-siseko** – Eyona nkundla iphakamileyo yelizwe, ehlangabezana nemiba enxulumene noMgaqo-siseko kuphela. Yonke imithetho ingavavanywa kwiNkundla yoMgaqo-siseko ukuqinisekisa ukuba ayiphikisani noMgaqo-siseko.

**Ingxoxo-mpikiswano** - Ukubanjwa kwengxoxo ngokusesikweni ngamalungu wePalamente yePhondo ngethuba lokuba amaqela awohlukeneyo ezopolitiko efumana ithuba lokunika izimvo zawo malunga nawuphi na umba kwiNdlu yePalamente.

**USEkela Somlomo** - Ilungu lePalamente yePhondo elonyulelwe ukuncedisa uSomlomo nokusebenza njengebambela likaSomlomo xa uSomlomo engekho.

## ULUHLU LWAMAGAMA

---

**Ulonyulo** - Inkqubo esetyenziswa ngabemi belizwe yokonyula aMalungu wabo wePalamente ngevoti. EMzantsi Afrika, ulonyulo lwasepalamente kufuneka lwenziwe rhoqo kwiminyaka emihlanu ubuncinane.

**Abantu abanyulayo xa bebonke** - Bonke abemi belizwe abaneliungelo lokuvota ngokusemthethweni.

**Isigqeba soMbuso** - Umongameli-mbuso weRiphabliki kunye namanye amalungu wekhabhinethi. Isigqeba soMbuso yintsika yecandelo likarhulumente elinoxanduva lokuhlenganisela nokufezekisa ngokusayina umgaqo-nkqubo.

**Umgangatho weGumbi leNgxoxo** - Indawo kuhlala kuyo aMalungu wePalamente yePhondo kwiGumbi leNgxoxo. Oku kungabhekisela kwindawo evulekileyo esebindini ngaphakathi kwigumbi lengxoxo.

**IGalari (uluntu)** - Indawo eyahluliweyo kwiGumbi leNgxoxo apho amalungu woluntu kunye neendwendwe ziqwalasela khona iinkqubo zeNdlu.

**I-Hansard** - Igosa lirekhodisha ngesixhobo esenza intetho (verbatim) zonke iingxoxo-mpikiswano zePalamente ngokusesikweni.

**Indlu** - Igumbi leNgxoxo le- WCPP

**OoSihlalo beNdlu** - Amalungu atyunjelwe ukuncedisa aMagosa aWongamelayo weNdlu yoWiso-mthetho kwimisebenzi yawo yolongamelo nakweminye imisebenzi enxulumne nolawulo lweziko. .

**Umbuzo woqhawuliso** - Umbuzo woqhawuliso yiingxoxo-mpikiswano encinane ethatha imizuzu eli-15 malunga nombona ekuthe kwenziwa isaziso ngawo kwiPhepha leMibuzo.

**Intshayelelo (yomthetho osayilwayo)** - Ukuzisa ngaphambili okanye ukunika iNdlu inkcazelo ngomthetho oyilwayo ngokusesikweni ukuze ukuxushwe.

**ICandelo leeNkundla** - Intsika yecandelo likarhulumente enoxanduva, lolawulo lobulungisa kwiinkundla zamatyala.

**Inkokheli yeQela lezoPolitiko leLungu eliPhikisayo** - Inkokheli yelona qela lezopolitiko lesininzi lelungu eliphikisayo kwiPalamente yePhondo.

**Uwiso-mthetho** - Isigama esisetyenziswa ngokwesiqhelo kumiselo-mthetho,

**Inkqubo yoWiso-mthetho** - Amanathelo alandelwayo kwiPalamente yePhondo nathi abenesiphumo sokumiselwa komthetho.

**INdlu yoWiso-mthetho** - Iqumrhu labameli abonyuliweyo bowiso-mthetho. Intsika yecandelo likarhulumente enamagunya wokumisela kunye nokutshintsha imithetho.

**Intonga yeGunya** - Yintonga enezihombiso ezihle kakhulu ezibonakalisa igunya likaSomlomo kunye nePalamente yePhondo. Ekuqaliseni kwenkqubo yePalamente yosuku, intonga yegunya ithathwa nguSajini weCandelo likaRhulumente (Serjent-at-Arms) ayifakwe kwiGumbi leNgxoxo nothi ayibeke kwisiphatho sayo esiphambi kweSitulo sikaSomlomo.

**Iqela leSininzi lezoPolitiko /iqela lezopolitiko elilawulayo** - Iqela lezopolitiko legqiza likarhulumente wephondo ngexxa yokuba linamalungu walo amaninzi awonyulwe ngabantu ukuba abekwiPalamente yePhondo ngaphezulu kunalo naliphi na elinye iqela lezopolitiko.

**Ilungu lePalamente yePhondo** - Umntu owonyulelwe ukuba abe kwiPalamente yePhondo leNtshona Koloni WCPP.

## ULUHLU LWAMAGAMA

---

**Umthetho oyilwayo weZimali** - Umthetho oyilwayo onyanzelisa ukuhlawulwa kwerhafu okanye wokurhafisa okanye oceba ukusetyenziswa kwemali ukulungiselela injongo ethile. Umthetho oyilwayo woHlahlo-lwabiwo-mali ngumthetho oyilwayo wezimali.

**Isiphakamiso** – Isiphakamiso sisicelo esenziwa lilungu sokuba iNdlu yenze into ethile, ukunika umyalelo wokuba kwenziwe loo nto okanye ukuvakalisa imbono yalo malunga nombala othile. Ukuba isiphakamiso samkelwe, siba sisisombululo esenziwa yiNdlu. Sisenokuba sisicelo sokuba iNdlu ibambe ingxoxo-mpikiswano ngombala othile.

**Isiphakamiso ngokwenza isaziso** - Isaziso esenziwa lilungu ngenjongo yokuchaza isiphakamiso ekufuneka sixukushwe.

**IPhepha loLuhlu lweMicimbi** - Inkqubo evunyelweyo okanye imiba yengxoxo echaza uluhlu lwemicimbi ekulindeleke ukuba ixoxwe yiNdlu ngosuku oluthile.

**IGosa eLongamelayo** - Ilungu elonyuliweyo okanye elityunjelwe ukuba ngumhlali-ngaphambili kwiiNdibano zoKuhlala zeNdlu.

**Inkcazo-ntetho** - Inkcazo-ntetho yamaqela ezopolitiko wegqiza elonyuliweyo lenani leevoti azifumeneyo kulonyulo.

**Urhulumente wePhondo** - Iqela lezopolitiko okanye ukumanyaniswa kwamaqela ezopolitiko alawula ngokulunga ekufumaneni ezona zihlalo zininzi kulonyulo lwasepalamente.

**Umphathiswa wePhondo** - Ilungu leSigqeba soMbuso lePhondo elilawula isebe elinye okanye nangaphezulu kumasebe karhulumente wephondo ngokwezopolitiko okanye abaphathiswa.

**Umanyelo-zimvo zoLuntu** - Intalanganiso yekomiti esisigxina ngenjongo yokufumana izimvo neembono zamalungu oluntu malunga nombala othe waqwalaselwa yiloo komiti.

**Ufundo** -Isigaba sokuphunyezwa komthetho oyilwayo ngokusesikweni kwiPalamente yePhondo.

**Umyalelo** - Ukuthatha isigqibo ngokusesikweni kweGosa eLongamelayo, ingakumbi malunga nombala wenkqubo onxulumene nemithetho kunye nokwenziwa kwemisebenzi yeNdlu.

**Isajini yeCandelo likaRhulumente** - IGosa lePalamente yePhondo elikhokela uSomlombo okanye iGosa eLongamelayo ukungena kwiGumbi leNgxoxo ngosuku ngalunye lokuhlala kweNdlu liphethe iNtonga yeGunya.

**Usohlomo** - IGosa elongamelayo eliyintloko lePalamente yePhondo leNtshona Koloni (WCPP), elonyulwe yiNdlu.

**Ikomiti eSisigxina** - Iqela lamalungu, ngokwesiqhelo asuka kwimibutho yezopolitiko eyohlukeneyo, netyunjwe ngokusesikweni ukuba iqwalasele kwaye inike ingxelo ngemithetho eyilwayo kunye neminye imicimbi egqithiselwe kuyo.

**Imithetho eSisigxina** - Imigaqo ekuvunyelwene ngayo ngokusesikweni malunga nokuqhuba umcimbi weNdlu kunye noweeekomiti..

**Intetho engavumelekanga ngokwasePalamente** –Ukusetyenziswa kwentetho ekhubekisayo okanye engamkelekanga lilungu kwiinkqubo zePalamente zendibano yeNdlu okanye ikomiti. Ukuba lifunyaniswe linetyala, amalungu ayakucela ukuba arhoxise intetho ekhubekisayo.

**Inkqubo yolawulo lweDemokhrasi yePalamente eyaqalisa ukusetyenziswa kwiPalamente yaseBrithani** - Inkqubo esetyenziswa ngurhulumente eyaqala kwelaseBrithani, ezona mbonakalo zayo ibangumntu oyintloko yaseburhulumenteni (uKumkanikazi) ongeyiyo intloko kurhulumente (uSosiba Jikelele) kunye nesigqeba sombuso sepalamente nesinoxanduva lwasePalamente ngokuthe ngqo.

## UFUNDO OLONGEZELELWEYO

---

### Umanyano laMalungu wePalamente lwaseYurophu kunye neAfrika (AWEPA)

Umbutho waMalungu wePalamente waseYurophu udibene neAfrika (AWEPA) usebenzisana nePalamente zaseAfrika ukomeleza idemokhrasi eAfrika (AWEPA).

### Iziko lezoBulungisa kunye noKuthintela uLwaphulo-mthetho

<http://www.cjcp.org.za/>

Usebenza ukuphuhlisa, ukwazisa kunye nokukhuthaza ukwenziwa kwemisebenzi yokhuseleko lolwaphulo-mthetho ngokusekelwe phezu kobungqina eMzantsi Afrika kunye, nalapho kukho inzuzo yoku, kwamanye amazwe asakhasayo.

### Iziko loPhando ngoBundlobongela kunye noXolelwaniso

<http://www.csvr.org.za/>

Iziko le loQeqesho oLuninzi elibandakanyeka kuphando, iinkcukacha zomgaqo-nkqubo, amaphulo ongenelelo loluntu, uhanjiso lweenkonzo, ezemfundo kunye noqeqesho, kwanokubonelela ngeenkonzo zabacebisi bangaphandle. Eyona njongo iphambili ye CSVR kukusebenzisa ubuchule bobungcaphephe ekwakheni uxolelwaniso, idemokhrasi kunye nenkcubeko yamalungelo oluntu nokuthintela ubundlobongela eMzantsi Afrika nakwamanye amazwe ase Afrika.

### Iziko laBantwana (UCT)

<http://www.ci.org.za>

Ligqalise kwimiceli-mngeni engundoqo yokubasempilweni kwabantwana baseMzantsi Afrika: intlupheko, ukungalingani, iHIV/AIDS, ukubhubha kwabantwana neentsana kunye nokugula, ubundlobongela kunye noxhatshazo. Intlupheko, ukungalingani, iHIV/AIDS, inqanaba eliphezulu lokugula kwabantwana neentsana, ubundlobongela noxhatshazo. Amaphepha-ndaba aquka Ukujongwa komlinganiselo wenani laBantwana baseMzantsi Afrika, ubalo lwaBantwana.

### IsiXeko saseKapa

<http://www.capetown.gov.za>

Ukufikelela kwimithetho kamasipala, imigaqo-nkqubo, iingxelo.

### Isikolo seMfundo yoLawulo lwesiXeko naMalungelo neeMfanelo zaBemi Baso

<http://www.civicsacademy.co.za/>

Isikolo seMfundo yoLawulo lwesiXeko naMalungelo waBemi Baso sizimele ngokunokwaso, ayisosikolo saseMzantsi Afrika sephulo lemfundo efunaneka ngomnatha wothungelwano lwe intanethi esifumana ingeniso. Sibonelela ngemiba equkathwe kwividiyo kunye nesivakalisi sandi ngenjongo yokwazisa nokomeleza iinqobo zedemokhrasi kunye nokubangummi onoxanduva. Kuba iSikolo seMfundo yoLawulo lwesiXeko naMalungelo waBemi baso sihlangebana nokuqulathwe kwimfundiso yaso enxulumene nedemokhrasi, ulawulo, ulonyulo, amaqela ezopolitiko, inkqubo yobulungisa, uMgaqo-siseko, ezoqoqosho, uluntu ngokubanzi, amalungelo oluntu kunye nesimo sendawo esingqongileyo.

### Umbutho wasePalamente we Common Wealth

<http://www.cpahq.org/cpahq/>

Uquka uluhlu lwamalungu kunye neenkukacha zoqhagamshelwano zabasebenzi abohlukeneyo base ofisini, kunye namaxwebhu amalunga nemiba yengxoxo efanelekileyo kwizindlu zowiso-mthetho.

### ICreamer Mediae

<http://www.polity.org.za>

Iwebhusayi enomnini wayo yabucala; iinkcukacha ezimalunga nomgaqo-nkqubo, umthetho, ezoqoqosho kunye nezopolitiko.

### I-Demokhrasi Iyasebenza (Democracy Works)

<https://democracyworks.org.za/>

IDemokhrasi yenza uhlalutyo loMsebenzi oSisiseko wokuphila kwedemokhrasi kwaye iphumeza amaphulo ongenelelo lokuveliswa kwezinto ezintsha naluncedo kunye nolwazi lobugcisa jikelele ukukhuthaza uphuhliso ngokuhlengeneyo ngokusebenzisa nzulu inkcubeko yedemokhrasi noxhotyiso ngezazakhono ngethuba iqinisekisa ukuzinza nokuzimela ngokwayo kwemisebenzi yayo eyenziwayo.

### **Uphuhliso loPhando loMgaqo-nkqubo (Development Policy Research Unit (UCT))**

<http://www.dpru.uct.ac.za>

Ukususela ngo 1990, i-DPRU yona ngokwayo yenze uphando olufanelekileyo malunga nomgaqo-nkqubo, ukuzimisela kwayo njengeline lamaziko aseMzantsi Afrika ankqenkqeza phambili kuphando kwimisebenzi yeemarike zemisebenzi, intlupheko kunye nokungalingani.

### **I-Econ 3x3**

<http://www.econ3x3.org/>

Toeganklike beleidsrelevante navorsing en kenmerkcommentaar oor werkloosheid, inkomsteverspreiding en inklusiewe groei in Suid-Afrika.

### **Iziko leeNkcukacha eZiluncedo zeMfundiso (Education Resources Information Center(ERIC))**

<http://eric.ed.gov/>

Ithala leencwadi lophando ngemfundo kunye neenkukacha elifumaneka ngomnatha wothungelwano lwe intanethi lo. I-ERIC ixhaswa liZiko leNzululwazi leSebe lezeMfundo laseMelika. Umnqophiso- we-ERIC kukubonelela ngovimba weenkukacha ezibhaliweyo ngokupheleleyo, eziphengululekayo, iibhayibhile ezifumaneka kwi intanethi zophando lwemfundiso kunye neenkukacha ukulungiselela abahlohli, abaphandi, noluntu ngokubanzi. Kuquka nephepha-ndaba leMfundo ePhakamileyo laseMzantsi Afrika.

### **I-Press ye HSRS (HSRC Press)**

<http://www.hsrbpress.ac.za/>

Icandelo likarhumente lopapasho lwangaphandle lwe-HSRC, lelona ziko likhulu lophando elisebenza ngokuzinikezela kwezizukululwazi ngoluntu kunye nabantu kwizwekazi laseAfrika.

### **IBhunga loPhando lweNzululwazi Ngabantu (Human Sciences Research Council (HSRC))**

<http://www.hsrb.ac.za>

Owona msebenzi ungundoqo we HSRC kukukhokela uthotho lweprojekthi ezininzi, umgaqo-nkqubo ofanelekileyo, ezenzululwazi ngoluntu kubasebenzisi bazo abakumaziko asekuhlaleni, imibutho engekho phantsi korhulumente kunye nee-arhente zophuhliso zehlabathi jikelele.

### **Iziko leZifundo ngeNtlupheko, uMhlaba kunye neZolimo (PLAAS)**

<http://www.plaas.org.za/>

I-PLAAS yenza uphando, ukubamba iindibano malunga nomgaqo-nkqubo, ukufundisa kunye noqeqesho malunga nezinto ezingamandla ezinxulumene nentlupheko engapheliyo kunye nendlela zokungalingani kumazwe aseMzantsi aseAfrika, ngogxininiso olulodwa lwendima engundoqo yokwakhiwa kwakhona kwesimo kunye nokulwela ukufumana umhlaba kunye nokutya kwezolimo kwisiqingatha selo zwekazi nangaphezulu.

### **Umanyano lwaNgaphathi lwasePalamente (Inter-Parliamentary Union)**

<http://www.ipu.org>

Umbutho wehlabathi wasePalamente wasekwa ngo 1889. Unezinto eziluncedo kakhulu, ezinjengeencwadi, iingxelo, imibuzo yophando, kunye namaphepha-ncwadi anokulowudwa okanye ufake i-odolo yazo ngaphandle kwentlawulo kwi ofisi yawo eyintloko eseGeneva.

### **IZiko Isandla (Isandla Institute)**

<http://www.isandla.org.za>

Umnqophiso weZiko kukusebenza njenge njengovimba weenkukacha zengqiqo yezemfundo (think-tank) woluntu nokugqalisa ngakumbi ekukhuthazeni ubulungisa, ukulingana nentlalo yoluntu ngokwedemokrasi kwiindawo ezisezidolophini.

### **Inkxaso yeZiko loWiso-mthetho**

<http://www.sals.gov.za/>

Injongo ethile yentsebenziswano yeZiko loWiso-mthetho kukomeleza icandelo leZiko lowiso-mthetho likarhulumente ngolawulo ngokumanyeneyo ukuqinisekisa uhanjiso lweenkonzo kunye noxanduva lokunika inkcazelo kubantu baseMzantsi Afrika.

## UFUNDO OLONGEZELELWEYO

---

### **Iziko laseMapungubwe lokuCingisa ngoBuchule (Mapungubwe Institute for Strategic Reflection)**

<http://www.mistra.org.za>

Iziko lophando elizimeleyo, eligqalise kwimingeni efunyanwa kwilizwe laseMzantsi Afrika.

### **IPalamente yeRiphabhliki yaseMzantsi Afrika**

<https://www.parliament.gov.za/>

### **Umbutho woManyano kaRhulumente waseMzantsi Afrika**

<http://www.salga.org.za/>

Iinkcukacha zoqhagamshelwano zoomasipala, izikhokelo zoomasipala, iinkcukacha eziphathelele nabasemagunyeni kurhulumente wommandla.

### **Iziko leeNkcukacha zoMthetho laseMzantsi kwiZwekazi laseAfrika**

<http://www.saflii.org/>

Lipapasha iinkcukacha zomthetho ukuze uluntu lubenokufikelela kuzo ngaphandle kwentlawulo neziqulatha ngakumbi umthetho wamatyala kunye nowiso-mthetho esuka eMzantsi Afrika I-SAFLII nayo igcina amaxwebhu ezomthetho asuka kwamanye amazwe kummandla nafumaneka ngentsebenziswano kunye namanye amaqela, iinzame zokusebenza ngokuhlangeneyo kwaye ingakumbi kutsha nje ngokuzinxulumanisa namanye aMaziko eeNkcukacha zoMthetho athi asekwakule mimandla.

### **Umnatha woThungelwano woMbutho waMazwe aseAfrika oNgekho Phantsi koRhulumente (NGO) waseMzantsi Afrika (SANGONeT)**

<http://www.ngopulse.org/>

Wasekwa ngo 1987, kwiminyaka engama 26 edlulileyo iSANGONeT yaqalisa ukuba ngumbutho woluntu lwasekuhlaleni ngokukhethekileyo nonembali ephantse inxulumane notshintsho kuluntu nakwezopolitiko olufunyanwa eMzantsi Afrika ngexesha lokutshintshela kwayo kwidemokrasi.

### **Ubalo-manani lwaBemi baseMzantsi Afrika**

<http://www.statssa.gov.za>

Lupapasha uphando lweQela laBasebenzi kunye nophando kumakhaya, kwanolunye ubalo-manani.

### **Ingxowa-mali yaBantwana yeZizwe eziManyeneyo**

<http://www.unicef.org/>

Ukubonelela ngoncedo lwentalo-ntle yabantu lwexesha elide kunye nokuncedisana nokuphulisa abantwana nomama kumazwe asakhasayo.

### **IQumrhu leZizwe eZimanyeneyo zoKulingana ngokweSini kunye noKuxhotyiswa kwaMakhosikazi ngeZakhono**

<http://www.unwomen.org/>

### **IZiko loMthetho laMakhosikazi**

<http://www.wlce.co.za>

Umbutho ongafumani ngeniso, iziko lomthetho elifumana inkxaso yoncedo lwengxowa-mali ngokuzimela nelifuna ukufezekisa ukulingana kumakhosikazi aseMzantsi Afrika.

### **URhulumente wePhondo leNtshona Koloni**

<http://www.westerncape.gov.za>

Uluhlu lwamaxwebhu ngokubanzi, iqela labaphathi bolawulo, iinkcukacha; kwanokufikelela kwiPhepha-ndaba loMbuso lePhondo ngaphandle kwentlawulo.

# IMIGQALISELO YAMAXWEBHU EZIKHALAZO NGOKOMTHETHO ONGU NOMB. 3 KA 2006

P.N. 232/2010  
31 Meyi 2010

## UMTHETHO WAMAXWEBHU

### EZIKHALAZO WASE NTSHONA KOLONI

#### ONGU NOMB. 3 KA 2006

#### IMIGQALISELO NGOKOMTHETHO ONGU NOMB. 3 KA 2006

Mna, Shahid Esau, uSomlomo wePalamente yePhondo leNtshona Kooni, ndisebenza ngokwecandao 8 loMthetho waMaxwebhu eZikhalazo waseNtshona Koloni, ka 2006 (Umthetho onguNomb. 3 ka 2006), ndimisela le migqaliso ichazwe kwiShedyuli yesi sazizo.

#### ISHEDYULI

##### Iingcaciso

1. Kule migqaliso, ngaphandleni kokuba okuqulathwe kubonakala ngenye indlela, igama okanye intetho yoMthetho enika ingcaciso yoMthetho ebalelwa kuwo inentsingiselo yayo, kunye—

**"uxwebhu lwesikhalazo"** luthetha isikhalazo, isicelo, ukumelwa okanye ukufakwa koxwebhu oluthunyelwa ngumfaki-sikhalazo kwiKomiti, kwaye singaba lolu hlobo—

- (a) uxwebhu olulodwa lwesikhalazo, olufakwe ngumfaki-sikhalazo oyedwa malunga nesicelo okanye isikhalazo esithile;
- (b) uxwebhu lwesikhalazo ngokuhlangeneyo, noluyingqokelela yoluhlu lotyikityo lwenani labafaki-zikhalazo malunga nesicelo okanye isikhalazo esithile;
- (c) amaxwebhu ezikhalazo zeqela, ezisuka kumntu omnye okanye amaxwebhu afakwe liqela labafaki-zikhalazo aqulatha isicelo okanye isikhalazo esifanayo kakhulu okanye esingenamohluko; okanye
- (d) uxwebhu lwesikhalazo olusuka embuthweni, somntu oyedwa okanye ukufakwa kwamaxwebhu liqela lombutho okanye umntu ogunyaziwe ngumbutho, malunga nesicelo okanye isikhalazo esithile;

**"ifayili yamaxwebhu wezikhalazo"** ithetha ukuthi ifayili echazwa ngokomgqaliso 8 wale mimiselo;

**"uMthetho"** uthetha ukuthi, uMthetho waMaxwebhu weZikhalazo waseNtshona Koloni, ka 2006 (Umthetho ongu

Nomb. 3 ka 2006), malunga nokuba yeyiphi imigqaliso ngokuphathelele nokubhengezwa kwayo.

##### Ukusetyenziswa kwemigqaliso

2. Le migqaliso isetyenziswa kulo naluphi na uxwebhu lwesikhalazo esifakiweyo ngokwalo Mthetho.

##### Uxanduva lweKomiti

(1.) IKomiti kufuneka—

- (a) ithathe amanyathelo afanelekileyo okwazisa abemi bePhondo ngamalungelo wabo ngokwalo Mthetho;
- (b) ithathe amanyathelo afanelekileyo wokwazisa abemi bephondo ngedilesi yendawo ohlala kuyo, inombolo yefeksi, i-imeyili okanye idilesi yeposi apho lunokuthunyelwa khona uxwebhu lwesikhalazo;
- (c) ukuqinisekisa ukuba abantu okanye ukuhlelwa ngokodidi kwabantu ababehlelekile ngaphambili ngenxa yocalulo olungafanelekanga bachwayitela ukuthatha kwabo inxaxheba ngokupheleleyo kwinkqubo yolawulo; kunyekunye
- (d) ukuziqhelanisa noxanduva kunye nokwenza izinto ngokungafihlisiyo kuqwalaselo lwamaxwebhu ezikhalazo.

(2) IiKomiti zisenokwenza oku—

- (a) Ukusombulula impikiswano ngothethathethwano okanye ngolamlo, apho kufanelekileyo, okanye ukuba umfaki-sikhalazo wenze isicelo sokwenza oko; kwaye
- (b) Apho kufanelekileyo, afake isikhalazo kuMkhuseli woluNtu ngokoMthetho woMkhuseli woluNtu, ka 1994 (Umthetho ongu Nomb. 23 ka 1994), ukuba indlela yokuziphatha komntu okanye iqumrhu ekufakwe ngaye uxwebhu lwesikhalazo, alikholisi.

## Amalungelo kunye nezibophelelo zomfaki-sikhalazo

- (1.) Umfaki-sikhalazo unelungelo lokuba—
  - (a) afake uxwebhu lwesikhalazo ngokuhambelana neSihlomeo A, sale migqaliselo;
  - (b) arhoxise uxwebhu lwesikhalazo ngokwentandoyakhe;
  - (c) afake uxwebhu lwesikhalazo ngokusebenzisa neliphi na kwiilwimi ezisetyenziswa ngokusesikweni zePhondo;
  - (d) afake uxwebhu lwakhe lwesikhalazo ngeelektroniki, nge imeyili okanye ngewebhusayithi yePalamente yePhondo leNtshona Koloni;
  - (e) ancediswe ngabasebenzi bolawulo bePalament yePhindo leNtshona Koloni ukufaka uxwebhu lwesikhalazo sakhe;
  - (f) kufuneka uxwebhu lwakhe lwesikhalazo luqwalaselwe yiKomiti, ngaphandle kokuba isikhalazo simele ukungathathwa ngenxa yokukhatywa kwaso njengokuba kuchaziwe kuMthetho A, wale migqaliselo;
  - (g) azimase intlanganiso apho uxwebhu lwakhe lwesikhalazo luyakuthi luqwalaselwe, ngaphandle kokuba uSihlalo weKomiti ucinga ngenye indlela kwaye wazise iKomiti kwangaphambi kokuba kubanjwe loo ntlanganiso ngembalelwano okanye ngalo ngqiqo kunye nezizathu zoko;
  - (h) anikwe izizathu ngembalelwano ezichaza izizathu zokuba iKomiti ingavumo ukuqwalasela uxwebhu lwakhe lwesikhalazo;
  - (i) aziswe ngembalelwano ngengqiqo yeKomiti malunga nesiphumo sesikhalazo
  - (j) acetyiswe yiKomiti, apho kuyimfuneko, nezinye iindlela zokusombulula le ngxaki anokuzifumana; kunye
  - (k) nokufikelela kwifayili yoxwebhu lwesikhalazo ngalo naliphi na ixesha.
- (2) Umfaki-sikhalazo unelungelo, nangaliphi na ixesha ngaphambi koku iKomiti igqibezele ingqiqo yayo malunga noxwebhu lwesikhalazo lokuba—
  - (a) afake iinkcukacha ezongezelelweyo kwiKomiti malunga nombala wengxoxo woxwebhu lwesikhalazo
  - (b) afake isiphikiso ngokuchasene nayo nayiphi na inkcazelo ngembalelwano, uluvo okanye ingcebiso azifumene kuye nawuphi na omnye umntu okanye iqumrhu malunga noxwebhu lwesikhalazo, ukuba ucelwe ukuba enze njalo yiKomiti; kunye/okanye
  - (c) afumane naziphi na iinkcukacha okanye nabuphi na ubungqina obunika isikhokelo malunga nombala wengxoxo yoxwebhu lwesikhalazo, kwaye ezo nkcukacha okanye ubungqina kufuneka ziqukwe kwifayili yoxwebhu lwesikhalazo.
- (3) Umfaki-sikhalazo kufuneka azise iKomiti ukuba kukho nawuphi na omnye umntu okanye iqumrhu elithe laqwalasela ukufakwa koxwebhu lwesikhalazo, laza lathetha ngomba ophathelele nokufakwa koxwebhu lwesikhalazo.

## Abasebenzi bolawulo

5. UNobhala kufuneka atyumbe abasebenzi abanjalo kwiKomiti nanjengokuba kusenokufuneka ukuba iKomiti yenze umsebenzi wayo osuka okanye onxulumene namaxwebhu ezikhalazo.

## Izibophelelo zabasebenzi bolawulo zokuhlengahlengisa amaxwebhu ezikhalazo

- (1.) Abasebenzi bolawulo xa befumene uxwebhu lwesikhalazo kufuneka—
  - (a) baqinisekise ukuba iSihlomeo A esikwifomu yale migqaliselo sigwalisiwe kwaye sasayinwa ngumfaki-sikhalazo okanye nawuphi na umntu ogunyazisiweyo ukuba enze njalo egameni lomfaki-sikhalazo;
  - (b) banike uncedo nawuphi na umntu ongenako ukufaka uxwebhu lwesikhalazo ngokuthobelana neemfuneko ezichazwe nguMthetho kunye nemigqaliselo; kunye
  - (c) Ingqiqo yokuba ingaba uxwebhu lwesikhalazo luhambelana neemfuneko zoMthetho kunye nale migqaliselo ukuze luqwalaselwe yiKomiti.
- (2) Abasebenzi bolawulo kufuneka—
  - (a) bavule ifayili yoxwebhu lwesikhalazo ngasinye esifunyenweyo;
  - (b) bafake inombolo yefayili kuxwebhu lwesikhalazo; kunye
  - (c) Bafake uxwebhu lwesikhalazo kwirejista ngokufaka iinkcukacha zalo kwirejista ekubhalwa kuyo.



- (2) Abasebenzi bolawulo kufuneka, kwixesha leeveki ezintlanu zomsebenzi emveni kokuba befumene uxwebhu lwesikhalazo, bazise umfaki-sikhalazo ngesimo sesikhalazo sakhe kunye nenombolo yefayili yaso.

### Inkqubo yokufaka uxwebhu lwesikhalazo

- (1.) Umfaki-sikhalazo kufuneka agcwalise iSihlomelo A esikwifomu ngokupheleleyo njengoko kuyinmfuneko ukuze abenako ukufaka uxwebhu lwakhe lwesikhalazo. (2) Uxwebhu lwesikhalazo kufuneka lufakwe ngolu hlobo—
- (a) ngemeyili erejistarishiweyo;
- (b) uluthumele kwiPalamente yePhondo leNtshona Koloni kwibhokisi etyunjiweyo;
- (c) luthunyelwe nge imeyili etyunjiweyo; okanye; okanye
- (d) ugcwalise umhlathi ofanelekileyo kwiwebhusayithi yePalamente yePhondo.
- (3) Isihlomelo A esikwi fomu, ekufuneka sigcwalise nguumfaki-sikhalazo, njengoko kuchaziwe kwicandelwana (1), kufuneka sisayinwe ngumfaki-sikhalazo okanye nokuba ngowuphi na omnye umntu ogunyazisiweyo ukuba enze njalo egameni lomfaki-sikhalazo.

### Ifayili yoxwebhu lwesikhalazo

- (1.) Ifayili yoxwebhu lwesikhalazo kufuneka iqulathe oku kulandelayo:
- (a) Ifomu yoxwebhu lwesikhalazo egcwaliswe ngokupheleleyo njengoko kuchaziwe kwiSihlomelo A;
- (b) ingxelo yophando lokuqala njengoko kuchaziwe kumgqaliselo 9;
- (c) nayiphi na ingcebiso okanye uluvo outhe lwathunyelwa kuwe ngumcebiso kwezomthetho malunga nalo mba ngokuchazwe kumgqaliselo 9(4); kunye
- (d) nazo naziphi na iinkcukacha ezirekhodishiweyo ngabasebenzi bolawulo.
- (2) Ifayili yoxwebhu lwesikhalazo kufuneka irekhodishe ukuba ingaba isikhalazo samkelekile okanye asamkelekanga kusini na njengoko kuchaziwe ngokwecandelo (4)1 kunye nele (2) lalo Mthetho.
- (3) Ikomiti kufuneka igcine irekhodi yoxwebhu lwesikhalazo ngasinye esifunyenweyo

### Uphando lokuqala loxwebhu lwesikhalazo

- (1.) Abasebenzi bolawulo, kufuneka kwixesha leentsuku ezilishumi zokubhalisa isikhalazo, baqhube uphando lokuqala kwaye banike ingxelo ngokuphathelele nolo xwebhu lwesikhalazo.
- (2) Abasebenzi bolawulo, xa besenza uphando oluchazwe kwicandelwana (1), kufuneka—
- (a) bafumane zonke iinkcukacha okanye amaxwebhu angqinelana noxwebhu lwesikhalazo agcinwe ligunya lesigqeba sePhondo, ibhunga likamasipala, nawuphi na omnye umntu okanye iqumrhu ekubhekiselwe kulo kuxwebhu lwesikhalazo, ukuba ezo nkcukacha ziyafumaneka; kunye
- (b) nokufumana izimvo zesebe elifanelekileyo ngokusesikweni, ibhunga likamasipala okanye iqumrhu ngokusesikweni elinoxanduva lomsebenzi oyinxalenye yomba wengxoxo otshis'ibunzi malunga noxwebhu lwesikhalazo.
- (3) Abasebenzi bolawulo kufuneka, bafumane uguqulelo loxwebhu lwesikhalazo apho kuyimfuneko kwiKomiti, kunye nawo nawuphi na amaxwebhu a fanelekileyo.
- (4) Xa uxwebhu lwesikhalazo luqulatha umbuzo womthetho okanye ukutolikwa kowiso-mthetho abasebenzi bolawulo kufuneka bacele umcebisi kwezomthetho wePaamente yePhondo ukuba abanike ingcebiso okanye achaze ngembono yakhe malunga nomba wengxoxo ophathelele noxwebhu lwesikhalazo.
- (5) UNobhala kufuneka enze isicelo ngembalelwano kuye nawuphi na umntu okanye iqumrhu, ngaphandle kwezo zichazwe kwicandelwana (2)(a) kunye no (b), ukunika iinkcukacha ezikuye, ezinxulumene nomba wengxoxo otshis'ibunzi woxwebhu lwesikhalazo, ezinokuthi zifunike ngokwesizathu esibalulekileyo ukugqibezela uphando lokuqala olumalunga noxwebhu lwesikhalazo.
- (6) Umntu okanye iqumrhu elichazwe kumgqaliselo ophantsi komye (5) kufuneka afake iinkcukacha kwixesha leentsuku ezintlanu zomsebenzi ukususela ngomhla wesicelo esenziwe nguNobhala.
- (7) UNobhala kufuneka kwiintsuku ezintlanu zomsebenzi emveni kokugqitye zelwa kophando lokuqala, agqithisele ifayili yoxwebhu lwesikhalazo kuSomlomo.

## Ukugqithiselwa

10. Emveni kokuba uSomlomo efumene ifayili yoxwebhu lwesikhalazo, kufuneka agqithisele ifayili yesikhalazo kwiKomiti ukuze siqwalaselwe kwaye yize nesisombululo.

## Inkqubo yekomiti

- (1) 1). Ikomiti kufuneka ilungelelanise kwaye iqwalasele inkqubo yoxwebhu lwesikhalazo esigqithiselwe kuyo ngu Somlomo ngokwalo Mthetho, le migqaliseko kunye neMithetho eSisigxina.
- (2) Ikomiti kufuneka yazise umfaki-sicelo malunga—
  - (a) nenkqubela phambili eyenziweyo malunga nesibongoza sakhe;
  - (b) umhla, indawo yokudibanela kunye nexesha apho kuya kuthi kuqwalaselwa uxwebhu lwesikhalazo; kunye
  - (c) nokuba ingaba iKomiti ingafuna okanye iqwalasele naluphi na uxwebhu lwesikhalazo esifakwe ngomlomo esisuka kumfaki-sikhalazo kunye/okanye nawuphi na amanye amaqela afanelekileyo.
- (3) Emveni kokuba iKomiti iqwalasele uxwebhu lwesikhalazo, kufuneka ifake ingxelo yesikhalazo kuSomlomo kunye nazo naziphi na izindululo ezichazwe kwicandelo 5(3) lalo Mthetho.
- (4) USomomo kufuneka aze azokwanda umcimbi wengxelo enjalo ngaphambili kwiPaamente yePhondo ukuze uqwalaselwe ngokuhambelana nezindululo zeKomiti.
- (5) Ikomiti kufuneka yazise umfaki-sikhalazo ngembalelwani kwaye ukuba kuyimfuneko, nawuphi na omnye umntu okanye iqumrhu elinomdla kuMba wengxoxo yoxwebhu lwesikhalazo —
  - (a) Malunga nalo naluphi na uphuhliso loxwebhu lwesikhalazo, kuquka iinkqubo zekomiti; kunye
  - (b) naso nasiphi na isisombululo esifanelekileyo sePalamente yePhondo esimalunga noxwebhu lwesikhalazo.
- (6) UNobhala kufuneka, kwiixesha leeviki ezine ukususela ngomhla wesisombululo sePalamente yePhondo— (a) azise umfaki-sikhalazo ngesiphumo sokugqibela soxwebhu lwesikhalazo; kwaye
  - (b) xa kuthe kwagatywa uxwebhu lwakho lwesikhalazo ngokwecandelo 5(6) loMthetho, umfaki-sikhalazo kufuneka aziswe malunga nokuthathwa kwesigqibo esinjalo kunye nezizathu zoko, ngokuhambelana nolungiselelo loMthetho woLawulo lwezoBulungisa, ka 2000, (Umthetho ongu Nomb. 3 ka 2000).

## Isihoko esifutshane

12. Le migqaliseko ibizwa ngokuba yimimiselo yamaxwebhu ezikhalazo yaseNtshona Koloni, 2010.

## Umhla wokuqalisa

13. Le migqaliseko iqalisa ukusebenza ukususela ngomhla we 8 Juni 2010.

# UMTHETHO WAMAXWEBHU EZIKHALAZO WASE NTSHONA KOLONI, KA 2006

## ACT

Ukubalula ilungelo lokufaka uxwebhu lwesikhalazo kwiPalamente yePhondo; ukulawula, ukufakwa nokuqatshelwa kwamaxwebhu ezikhalazo; nokubonelela ngemiba yezehlo.

**M**AWENZIWE USEBENZE yiPalamente yePhondo leNtshona Koloni, ngoku hlobo lulandelayo:—

### Iingcaciso-magama

1. Kulo Mthetho, ngaphandle kokuba okuqulathwe kuwo kubonakaliswa ngenye indlela—  
"IKomiti" kuthetha ukuthi ikomiti esisixhina yePalamente yePhondo enamalungu ama-5 awonyulelwe ukuhlangabezana nezikhalazo zoluntu;  
"Umgqaqo-siseko weSizwe" kuthetha ukuthi uMgqaqo-siseko weRiphabliki yaseMzantsi Afrika, ka 1996;  
"Umfaki-sicelo" kuthetha ukuthi umntu ofake uxwebhu lwesikhalazo kwiPalamente yePhondo;  
"ISigqeba soMbuso sePhondo" kuthetha ukuthi, isigqeba sombuso sephondo ekubhekiselwa kuso Kwicandelo 35 loMgqaqo-siseko waseNtshona Koloni ;  
"IPalamente yePhondo" kuthetha ukuthi, iPalamente yePhondo yeSithili saseNtshona Koloni ;  
"UNobhala" kuthetha ukuthi, uNobhala wePalamente yePhondo leNtshona Koloni;  
"USomlomo" kuthetha ukuthi, uSomlomo wePalamente yePhondo ;  
"Imithetho eSisixhina" kuthetha ukuthi imithetho emiselwe yiPalamente yePhondo ngokwecandelo 23(3)(b) loMgqaqo-siseko waseNtshona Koloni ;

"lo mthetho" uquka imigqaliselo emiselwe phantsi kwecandelo 8

### Ilungelo lokufaka uxwebhu lwesikhalazo

2. (1) Nawuphi na umntu, iqela labantu, iziko okanye umbutho banelungelo lokufaka uxwebhu lwesikhalazo kwiPalamente yePhondo.  
(2) Ilungelo lokufaka uxwebhu lwesikhalazo kufuneka lisetyenziswe ngokwalo Mthetho.  
(3) Icandelwana (1) alisetyenziswa lilungu leSigqeba soMbuso sePhondo okanye liGunya leSigqeba leSizwe.  
(4) Ilungu lePalament yePhondo alinako ukufaka ukufaka uxwebhu lwesikhalazo sokucela ukulungiswa kwelungu ePalamente.

### Iimfuneko zokufaka amaxwebhu ezikhalazo ngokusesikweni

3. (1) Isikhalazo kufuneka—  
(a) sibekwifomu emiselweyo ngokusemthethweni;  
(b) sibekolunye lweelwimi ezisetyenziswa ngokusesikweni zePhondo;  
(c) sisayinwe nguMfaki-sikhalazo ngamnye okanye ukuba oko kuyimfuneko okanye ngokwesigunyaziso soMfaki-sikhalazo, ngomnye umntu egameni loMfaki-sikhalazo; kwaye  
(d) sifakwe kuNobhala.  
(2) uxwebhu lwesikhalazo kufuneka lunike inkcazelo yoku—  
(a) amagama kunye nedilesi yoMfaki-sikhalazo ngamnye;  
(b) ingaba uMfaki-sikhalazo uthethelela bani; kwaye  
(c) zeziphi ezinye iindawo ezisetyenziswe nguMfaki-sicelo ukuzama ukusombulula lo mba kuthethwa ngawo, ukuba zikhona.

### Okuqulathwe kumaxwebhu ezikhalazo

4. (1) Ngokuhambelana necandelwana (2), uxwebhu lwesikhalazo lusenukqulatha nasiphi na isicelo, isikhalazo, ukumelwa, okanye ukufakwa koxwebhu lwesikhalazo esinxulumene nemisebenzi yePalamente yePhondo okanye iSigqeba soMbuso sePhondo, kuquka nawuphi na umcimbi
5. —  
(a) enokuthi iPalamente yePhondo iphumeze umthetho ngawo;  
(b) ophathelele noxanduva lwalo naliphina ilungu leSigqeba soMbuso sePhondo;  
(c) owabelwe ilungu leSigqeba soMbuso sePhondo ngokwecandelo 99 loMgqaqo-siseko weSizwe;  
(d) onxulumene nendlela yokuziphatha kwelungu leSigqeba soMbuso sePhondo okanye nabaphi na abaqeshwa baso okanye ii-arhente; okanye  
(e) onxulumene nokonganyelwakwephondo kunye nokuqwalaselwa kukarhulumente wommandla ngokwecandelo 49 kunye neSahluko 5 soMgqaqo-siseko waseNtshona Koloni.  
(2) uxwebhu lwesikhalazo lugatywe ukuba—  
(a) asihambelani nemiba equlathwa kwimicimbi ekubhekiselwa kuyo kwicandelwana (1);  
(b) siphazamisana negunya lecandelo leenkundla jikelele zeRiphabliki;  
(c) siphathelele nomcimbi omalunga nokuba zeziphi iinkqubo zomthetho zePalamentein ezisamiselwe ukuphendulwa ngelinye ixesha, okanye  
(d) siphathelele nombisa osaphandwayo yikhomishoni yemibuzo eyonyulwe nguMongameli-mbuso weRiphabliki yaseMzantsi Afrika okanye yiNkulumbuso yePhondo.

# UMTHETHO WAMAXWEBHU EZIKHALAZO WASE NTSHONA KOLONI, KA 2006

## Ukuqwalaselwa kwamaxwebhu ezikhalazo yiKomiti

1. (1) Onke amaxwebhu ezikhalazo ezifunyenwe yiPalamente yePhondo kufuneka agqithiselwe kwiKomiti.
- (2) Ikomiti kufuneka—
  - (a) Ikhusele kwaye ikhuthaze amalungelo waBafaki-zikhalazo kulungiselelo lwalo Mthetho; kwaye
  - (b) ngokwecandelwana (5) kunye nele (6), nokuqwalaselwa koxwebhu lwesikhalazo ngasinye ukuba sigqithiselwe kuyo.
- (3) Ikomiti kufuneka inike ingxelo malunga noxwebhu lwesikhalazo ngasinye kwiPalamente yePhondo. Kule ngxelo, iKomiti ingenza naziphi na izindululo ezifanelekileyo, kuquka okokuba—
  - (a) Umcimbi uwela kwizakhono zokubanako ukwenza imisebenzi kwiPalamente yePhondo, iPalamente yePhondo yona ngokwayo kufuneka ithathe amanyathelo wokuchaza imiba exhalabisayo yoMfaki-sikhalazo;
  - (b) umcimbi ugqithiselwe kwenye ikomiti yePalamente yePhondo;
  - (c) umcimbi ugqithiselwe kwiSigqeba soMbuso sePhondo okanye kwiBhunga likamasipala wePhondo ukuze uqwalaselewe;
  - (d) umcimbi ugqithiselwe kulo naliphi na iqumrhu kanye uGunyanziso, kuquka iGunya lezoTshutshiso leSizwe okanye iziko elimiselweyo kwiSahluko 9 soMgaqo-siseko weSizwe;
  - (e) ukwenziwa kwesindululo emntwini okanye iqumrhu ngembono yokusombulula lo mcimbi utshis'ibunzi malunga noxwebhu lwesikhalazo; okanye
  - (f) ukungathathwa kwalo naliphi na inyathelo malunga noxwebhu lwesikhalazo.
- (4) USihlaloweKomiti kufuneka aqinisekise ukuba uMfaki-sicelo ngamye uhlala esaziswa rhoqo ngophuhliso olwenziwayo malunga noxwebhu lwesikhalazo esifakiweyo kwangexesha apho kufanelekileyo, kuquka iinkqubo zeKomiti malunga nesikhalazo esifakiweyo kunye naso nasiphi na isisombulelo esifanelekileyo kwiPalamente yePhondo.
- (5) Ikomiti kufuneka igatye uxwebhu lwesikhalazo ekubhekiselwa kuso kwicandelo 4(2),
- (6) (6) Ikomiti ingasikhaba isikhalazo ukuba—
  - (a) uxwebhu lwesikhalazo aluthobelani ngokupheleleyo kunye necandelo 3(1) okanye (2);
  - (b) uxwebhu lwesikhalazo luqulatha intetho ekhubekisayo;
  - (c) uxwebhu lwesikhalazo luthetha ngeenkqubo zePalamente yePhondo okanye nayiphi na kwiikomiti zayo okanye ngenye indlela ngokuchasene neMithetho eSisigxina okanye umsebenzi wePalamente yePhondo leNtshona Koloni; okanye
  - (d) umfaki-sicelo aka exhausted zonke ezinye iindlela ezikhoyo zokufumana izisombululo, kuquka, apho kufanelekileyo iinkqubo zomthetho.
- (7) Xa ikomiti ithetha yalugatya uxwebhu lwesikhalazo ngokwecandelwana (5) okanye (6)—
  - (a) iKomiti kufuneka inike izizathu zesigqibo esithathiweyo; kwaye
  - (b) uNobhala kufuneka azise uMfaki-sicelo malunga nokugatya koxwebhu lwakhe lwesikhalazo kunye nezizathu zoko.
- (8) Inkqubo yeKomiti imiselwa yiMithetho eSisigxina.

## Iingxelo zeSigqeba soMbuso sePhondo

2. Xa iPalamente yePhondo igqithisele lo mba kwiGunya leSigqeba sePhondo njengokuba kuchaziwe kwicandelo 5(3)(c), iNkulumbuso okanye uMphathiswa onoxanduva loko kufuneka, azise umcimbi ozakwandlalwa ngokunika ingxelo kwixesha leeveki ezine ukususela ngomhla wokufumaneka kwesi sombululo sifanelekileyo, kwiPalamente yePhondo ngokwesikhundla seSebe loMbuso lePhondo malunga nalo mba kunye nawaphi na amanyathelo athathiweyo okanye ekufuneka ethathiwe ukulungisa imiba exhalabisayo yoMfaki-sikhalazo.
- 3.

## Inkxaso yaBaphathi boLawulo

4. Unobhala kufuneka aqinisekise ukuba kubonelelwa ngoncedo lolawulo ngakwaneleyo—
  - (a) kubafaki-zikhalazo abalindelweyo ukuze babenako ukufaka amaxwebhu wabo wezikhalazo ngokuthobelana neemfuneko zalo Mthetho; kunye; kunye
  - (b) nekomiti ukwenzela ukuba ibenako ukwenza imisebenzi yayo.

## Imimiselo

5. (1) emveni kokuba uSomlomo ecebise neKomiti—
  - (a) kufuneka inike imigqaliselo emiselwe kwifomu yoxwebhu lwesikhalazo ekubhekiselwa kuso kwicandelo 3(1)(a); kwaye
  - (b) inganika imigqaliselo, engangqinelaniyo nalo Mthetho okanye neMithetho eSisigxina, malunga—
    - (i) nendlela esetyenziswayo kunye neenkqubo zokufakwa kwamaxwebhu ezikhalazo nokuhlangabezana nezikhalazo; kwaye
    - (ii) ngokwesiqhelo, nawuphi na umcimbi ofunekayo okanye oluncedo kufuneka umiselwe ukuze kufezekiswe okanye kukhuthazwe iinjongo zalo mthetho
- (2) UNobhala kufuneka—
  - (a) ngokukhawuleza nje ekubeni uqalise ukusetyenziswa emveni kokumiselwa kwemithetho phantsi kwecandelwana (1), ukupapashwa kwemigqaliselo kwiPhepha loMbuso lePhondo;
  - (b) nangeliphi na ixesha lolungiso lwemimiselo, ulungiselelo lweguqulelo emanyanisiweyo; kunye
  - (c) nokubonelela ngekopi yemimiselo okanye iNguqulelo yawo emanyanisiweyo, as the case may be, ngokuhlangeneyo nekopi yawo nawaphi na amalungiselelo afanelekileyo weMithetho eSisigxina enxulumene namaxwebhu wezikhalazo, kulo naliphi na ilungu loluntu elicela loo kopi.

## Isihloko esifutshane kunye nokuqala kwaso

6. Lo Mthetho ubizwa ngokuba nguMthetho waMaxwebhu eZikhalazo waseNtshona Koloni ka 2006, kwaye uqale ukusebenza ngomhla omiselwe yiNkulumbuso ngokwenza isaziso kwiPhepha-ndaba loMbuso lePhondo



# Wes-Kaapse Provinsiale Parlement Western Cape Provincial Parliament Ipalamente yePhondo leNtshona Koloni

## (ISIHLOMELO A)

### IFOMU YOXWEBHU LWESIKHALAZO

Umthetho waMaxwebhu eZikhalazo waseNtshona Koloni, ka 2006 (Umthetho onguNomb. 3 ka 2006)

#### 1. IINKCUKACHA ZOMFAKI-SIKHALAZO

1.1 Amagama apheleleyo: \_\_\_\_\_

1.2 Igama lomntu okanye leqela elimelwe ngumfaki-sikhalazo: \_\_\_\_\_

1.3 Idilesi: \_\_\_\_\_

1.4 Ifowuni

Ekhaya: \_\_\_\_\_

Emsebenzini: \_\_\_\_\_

Ifowuni yeselula: \_\_\_\_\_

1.5 Inombolo yeFeksi: \_\_\_\_\_

1.6 I-imeyili: \_\_\_\_\_

1.7 Inombolo yeSazisi /Inombolo yoKubhalisa ukuba liqumrhu lomthetho : \_\_\_\_\_

#### 2. IINKCUKACHA ZOZWEBHU LWESIKHALAZO

Umfaki-sikhalazo kufuneka anike ingcaciso epheleleyo yezizathu zokufaka uxwebhu lwesikhalazo

---

---

---

---

---

---

---

---

---

---

**3. AMANYATHELO ATHATHWE NGUMFAKI-SIKHALAZO UKUSOMBULULA LO MBA**

Umfaki-sikhalazo kufuneka anike iinkcukacha ezipheleleyo zamanyathelo athathiweyo okusombulula lo mcimbi, ngaphandle kokufaka olu xwebhu lwesikhalazo.

---

---

---

**4. INGCACISO YABO NABUPHI NA UBUNQINA OBUNGABHALWANGA OBUFAKWE NOXWEBHU LWESIKHALAZO**

---

---

---

**5. INANI ELIPHELELEYO LAMAPHEPHA EZIHLOMELO ZALE FOMU YOXWEBHU LWESIKHALAZO**

---

---

---

**6. ISIHLOKO KUNYE NAMAPHEPHA ESIHLOMELO SEFOMU YOXWEBHU LWESIKHALAZO**

---

---

---

**7. UHLOBO LONCEDO OLUFUNWA NGUMFAKI-SIKHALAZO ESIBANGELA UKUBA AFAKE OLU XWEBHU LWESIKHALAZO**

---

---

**8. ISIBHENGEZO SOMFAKI-SIKHALAZO**

Ngokusayina olu xwebhu lwesikhalazo okanye ngokufaka uphawu kolu xwebhu lwesikhalazo, umfaki-sikhalazo ubhengeza okokuba -

- (a) (okuqulathwe kuxwebhu lwesikhalazo kunyanisekile kwaye kuchanekile, kwaye
- (b) uxwebhu lwesikhalazo alukho malunga nombala -
  - (i) ophathelele nawo nawuphi na umcimbi owenza isiseko soxwebhu lwesikhalazo esisamisiweyo kude kufikelele ixesha lokuphendulwa kwaso okanye isikhalazo esiphenduliweyo ngaphambili.
  - (ii) Osamiselwe elinye ixesha enkundleni
  - (iii) oxhomekeke ekubeni yeyiphi inkundla yomthetho ethe yawisa isigwebo sokugqibela okanye ethe yanika umyalelo wokugqibela, kunye/okanye
  - (iv) osamisiweyo phambi kwekhomishoni yophando etyunjwe ngoko Mthetho ka 1998, weKhomishoni yePalamente yePhondo leNtshona Koloni (Umthetho onguNomb. 10, ka 1998)

Utyikityo okanye uphawu loMfaki-sikhalazo Umhla

Indawo

---

Utyikityo lwamangqina apho Umfaki-sikhalazo afake uphawu

---



Wes-Kaapse Provinsiale Parlement  
Western Cape Provincial Parliament  
Ipalamente yePhondo leNtshona Koloni

**IPHEPHA LOVAVANYO LWENDIBANO YOCWEYO**

**Umhla weNdibano yoCweyo:**

---

**Igama kunye neFani:**

---

**Igama lombutho wakho:**

---

1. Ufunde ntoni ngexesha lenkqubo yokufundisa ngowiso-mthetho?

---

---

---

2. Ingaba okuqulathwe kwincwadi yokufundisa ngamagama asetyenziswayo owiso-mthetho kube luncedo njani kuwe ekuqondeni ngcono ngamagama asetyenziswayo kwezomthetho kunye nemixholo yawo? \_\_\_\_\_

---

---

3. Ungayicacisa njani indlela yobuchule obusetyenziswa ngumququzeleli (aba)?

---

---

---

4. Ingaba zeziphi iimpawu onokuzichaza ngokoluvo lwakho malunga nendibano yocweyo kwaye ungacebisa ekubeni kungenziwa ntoni na ukuphucula iindibano zocweyo zexesha elizayo?

---

---

---

**Enkosi ngokuthatha kwakho inxaxheba.**







linkcukacha zoQhagamshelwano

**Idilesi**

7 Wale Street, CapeTown, 8001

PO Box 648, Cape Town, 8000

**Umnxeba**

021 487 1600

**I-imeyili**

info@wcpp.gov.za

**Iwebhusayithi**

www.wcpp.gov.za

Ifumaneka phi iPalamente yePhondo leNtshona Koloni

