



Wes-Kaapse Provinsiale Parlement
Western Cape Provincial Parliament
IPalamente yePhondo leNtshona Koloni

**INKQUBO YOWISO-MTHETHO:
EKAZWELONKE NEYEPHONDO**

UXWEBHU LWEMIBA 15

UPHENGULULO 1, 20 JULAYI 2016

Ngokwemigaqo yomgaqo-siseko igunya lezowiso-mthetho lenqwanqwa likazwelonke likarhulumente liwela kwiPalamente kazwelonke ngeli lixa igunya lezowiso-mthetho lenqwanqwa lephondo likarhulumente liwela kwizindlu zowiso-mthetho zamaphondo.

IPalamente yePhondo ibotshelelwa kuphela yimigaqo-siseko kazwelonke nowephondo.

Umgaqo-siseko kazwelonke uyehlula phakathi kwezi zintlu zomthetho zilandelayo:

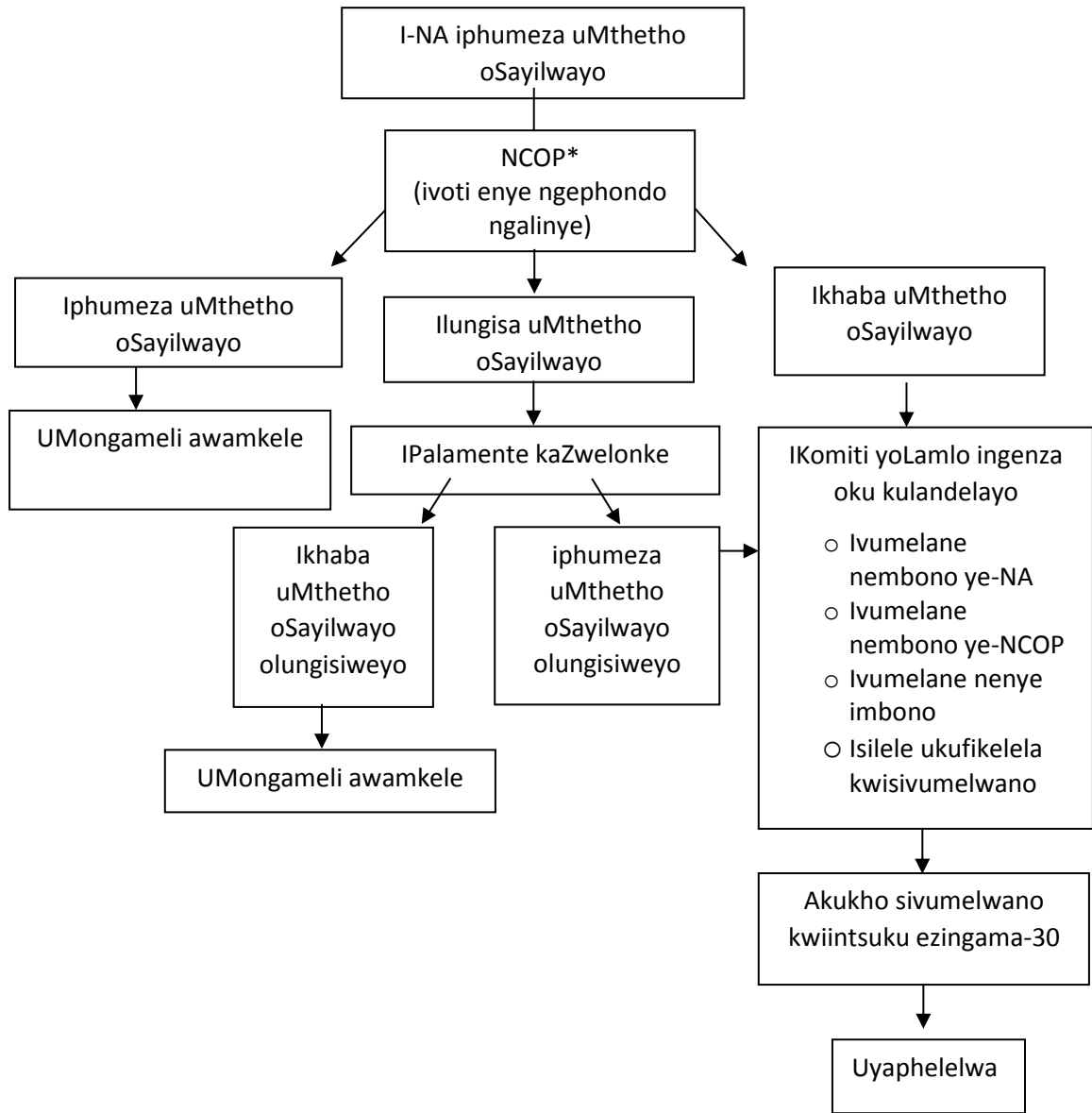
1. ICandelo 75 - Imithetho esayilwayo eqhelekileyo engachaphazeli maphondo
2. ICandelo 76 - Imithetho esayilwayo eqhelekileyo echaphazela amaphondo
 - ICandelo 76(1)- Eqaliswe yiPalamente kaZwelonke
 - ICandelo 76(2)- Eqaliswe yi-NCOP
3. ICandelo 77 - Imithetho esayilwayo yezemali
4. ICandelo 74 - IMithetho esayilwayo elungisa uMgaqo-siseko
 - Izilungiso zomgaqo-siseko ezichaphazela amaphondo
 - Izilungiso zomgaqo-siseko ezingachaphazeli maphondo

Kwiinjongo zolu xwebhu lwemiba kuphela ngumgaqo weCandelo 76 oza kuboniswa. Umboniso onengqiqo wazo zonke izintlu zomthetho kazwelonke uyafumaneka xa uceliwe.

Ngokunxulumene nokuhamba komthetho kumaphondo imiboniso yemithetho esayilwayo eqhelekileyo kunye nemithetho esayilwayo yezemali iyabonelelwa.

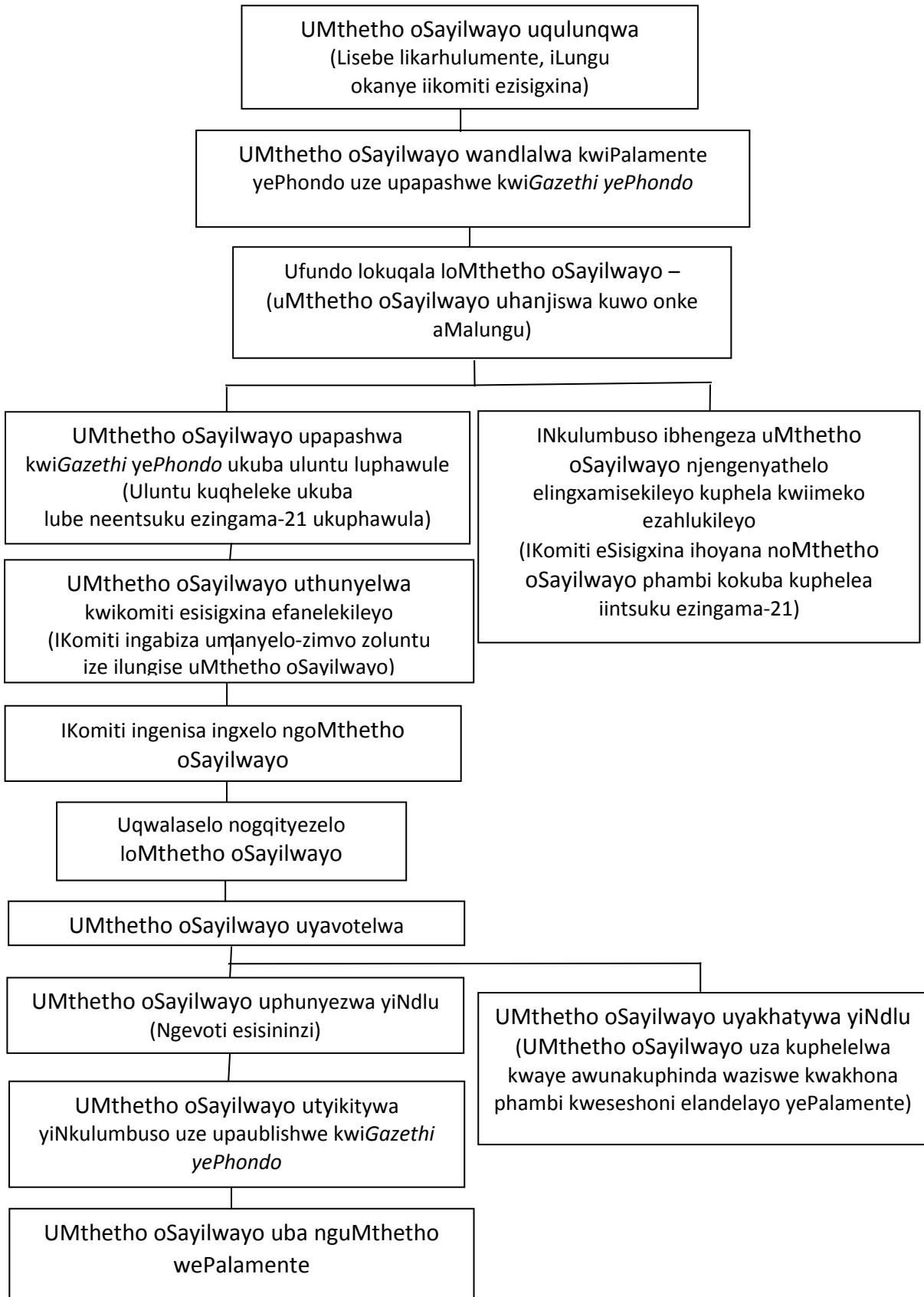
IMITHETHO ESAYILWAYO EQHELEKILEYO ECHAPHAZELA AMAPHONDO

EQALISWE YIPALAMENTE KAZWELONKE (NA) {ICANDELO 76(1)}



* AMaphondo anika izigunyaziso kumagqiza awo ukuba axhase okanye angaxhasi uMthetho oSayilwayo

IMITHETHO ESAYILWAYO EQHELEKILEYO YEPHONDO



IMITHETHO ESAYILWAYO YEZEMALI

Ukwaziswa

UMthetho oSayilwayo uyaziswa aze amaphepha anxulumene nawo andlalwe

UFundo lokuQala

UMthetho oSayilwayo ufundwa okokuqala ngaphandle kokuba kubekwe umbuzo kunye neekopi zomthetho osayilwayo aze amaphepha anxulumene nawo ahanjiswa kuwo onke aMalungu

Ukuthunyelwa kwikomiti emva koFundo lokuQala

Intetho yokwazisa nawaphi na amaphepha andlalwe kwiTafle athunyelwa kwikomiti efanelekileyo (kuqheleke ukuba ibe yiKomiti eSisigxina kwezeMali

Uqwalaselo lweshedyuli kuMthetho oSayilwayo wolwabiwo-mali

Xa umgaqo womthetho osayilwayo wolwabiwo-mali oneshedyuli uphunyeziwe, iivoti kwishedyuli makuxoxwe ngazo.

Ingxoxo yeeVoti kwiShedyuli

Ukuba uMthetho oSayilwayo wezeMali uneshedyuli, zonke iiVoti eziqulathwe kwiShedyuli ziyaxoxwa zize zivotelwe.

Ugqityezelo loMthetho oSayilwayo wezeMali

Xa ishedyuli kumthetho osayilwayo wolwabiwo-mali, okanye umgaqo womthetho osayilwayo wezemali ongenashedyuli uphunyeziwe, umthetho osayilwayo ubekwa kwiPhepha loLuhlu lweMicimbi ukuze ugqityezelwe.

Ukwamkelwa yiNkulumbuso

UMthetho oSayilwayo utyikitywa yiNkulumbuso uze upapashwe